



venue | portfolio v4.0

CONTENTS

ABOUT MFCC	3
ABOUT MALTA	4
LOCATION	6
VENUE	7
TECHNICAL DETAILS	8
AREA & CAPACITY	10
TFS HEIGHT VARIATIONS	15
ARCHES	16
TIERED SEATING	18
GRANDE MARQUEE	20
MIDI MARQUEE	22
PETITE MARQUEE	24
SETUP	
CONFERENCES	26
EXHIBITIONS	50
OTHER USE	56
THEATRE	66
CONCERTS	69
PERSONALITIES	74
ADDITIONAL SERVICES	76

MFCC Ltd.

Level 1 | Millennium Stand

The National Stadium

Ta' Qali | ATD4000

MALTA

TEL +356 2141 0371

+356 2141 0372

EMAIL info@mfcc.com.mt

WEB www.mfcc.com.mt

FACEBOOK /MFCC.Malta

ABOUT MFCC

The Malta Fairs and Conventions Centre, also known as MFCC, is Malta's largest international conference and exhibition venue. The largest inside area measures 170m x 50m, offering 8500m² of uninterrupted space, providing a blank canvas for the creation of a multitude of event types. These range from state-of-the-art trade shows, conferences, meetings, events and exhibitions both produced locally and internationally.

MFCC is also a service provider to the events industry. This is coupled with a human resource capacity that is creative and motivated to deliver high quality and up beat products, keeping up with industry trends and developments.

MFCC was setup in October 2006. It has recently been acquired by the Corinthia Group. This ownership has boosted MFCC's drive to continue to achieve its objectives within a business framework that completes the service product provided.



ABOUT MALTA

The Maltese archipelago lies virtually at the centre of the Mediterranean, 93 km south of Sicily and 288 km north of Africa. The archipelago consists of three islands: Malta, Gozo and Comino with a total population of over 400,000 inhabitants occupying an area of 316 square kilometers.





GOZO

COMINO



**MALTA TOURISM AUTHORITY
TOURIST INFORMATION OFFICES**

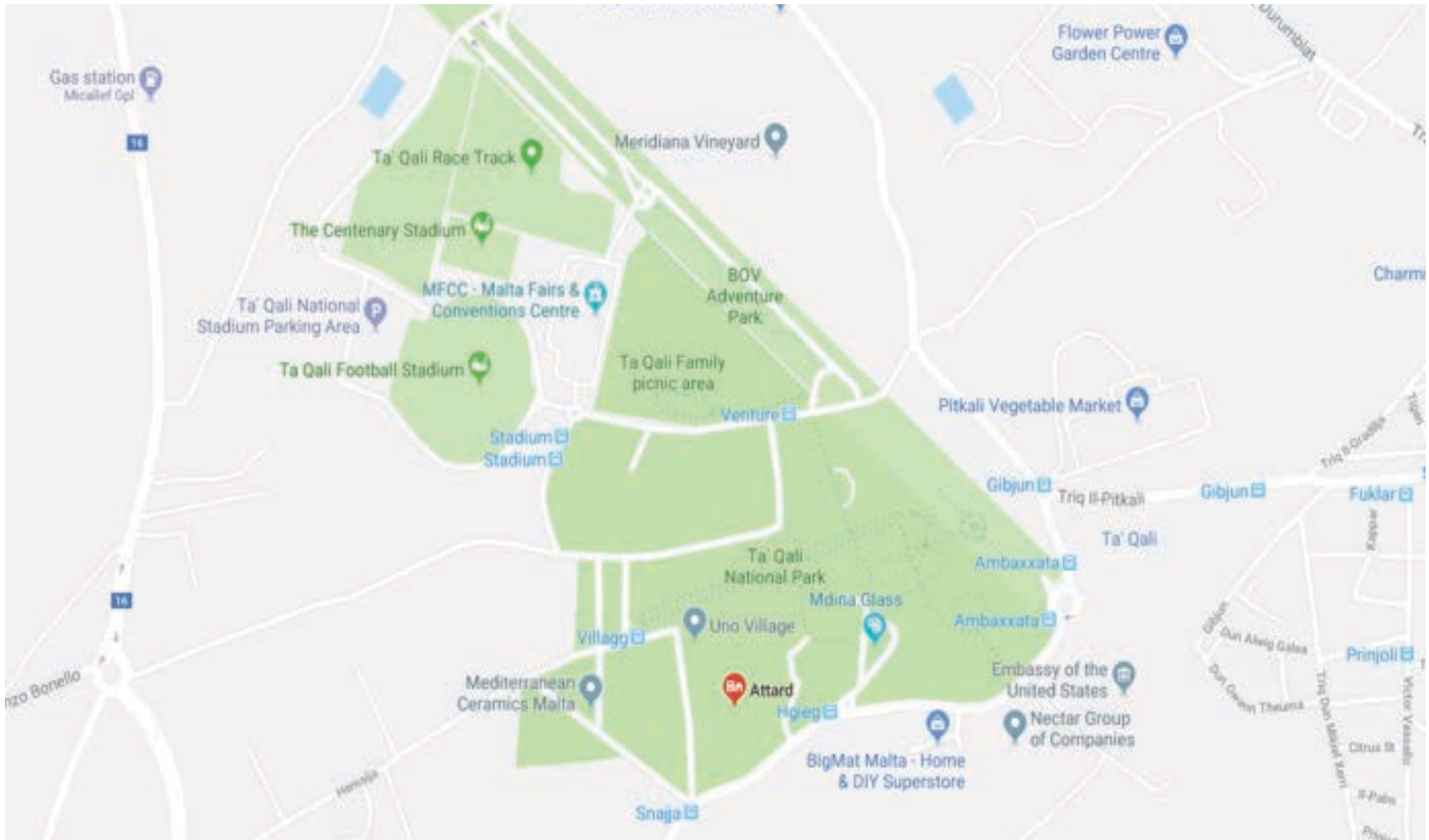
Valletta	22915440/1/2
Airport	23696073/4
Mdina	21454480
Mellieha	21524666
Valletta	21220633
Vittoriosa	21800145
Gozo	22915452/3
Mgarr Harbour Info Booth	21554538

MALTA

© copyright Malta Tourism Authority 2014

- Cave
- Museum
- Prehistoric Site
- Sandy Beach
- Fort
- Tower
- Gozo Ferry
- National Aquarium

LOCATION



ACCESSIBILITY

BY CAR FROM VALLETTA - follow indications to Attard, passing by triq l-Imdina to the National Stadium

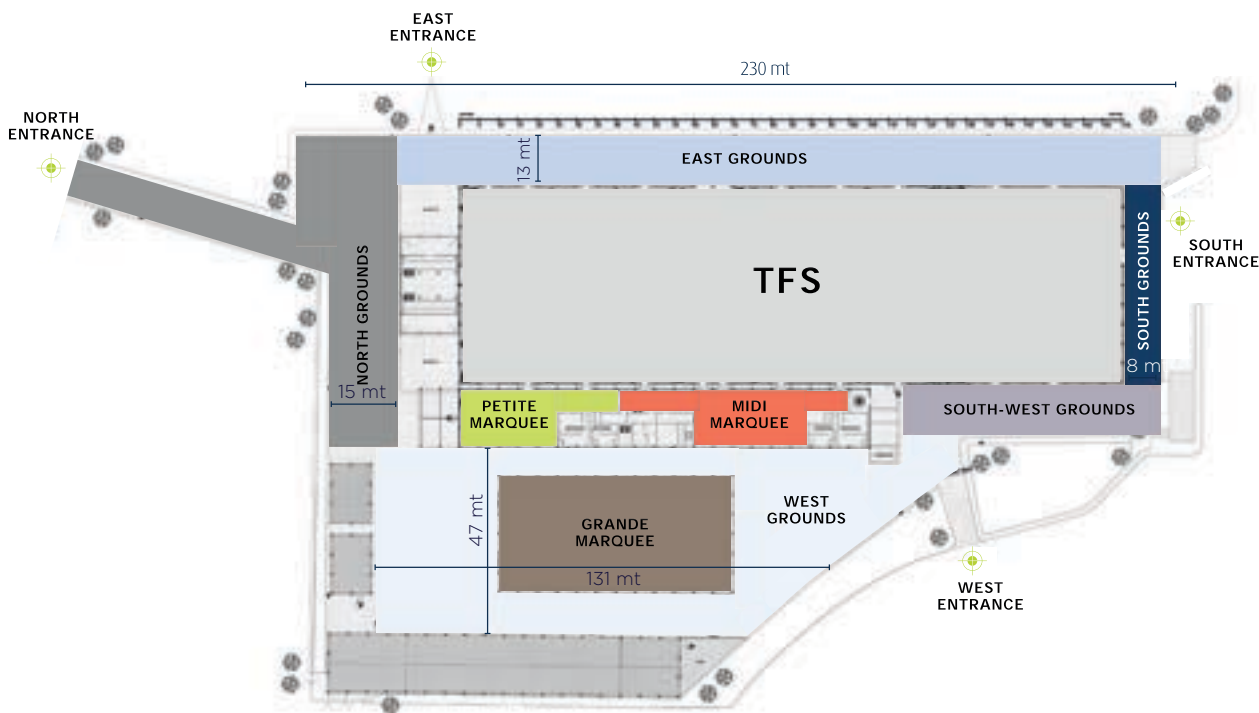
BY BUS - FROM VALLETTA no.56, FROM SLIEMA no.202, FROM BUGIBBA no.186

VENUE

The Malta Fairs and Conventions Centre is housed under a Tension Fabric Structure (TFS). When it was initially setup it measured 130m x 50m, totalling 6500m². In November 2018 it was extended by 40m, to provide more indoor space for an International local event that is expanding rapidly. Today it measures 170m x 50m, totalling 8500m².

It is a multi-purpose venue, and adapts itself to various event concepts, as is required by the client.

Together with the main hall, within its set-up MFCC also has additional indoor and outdoor space made up, as follows:



4 Outside areas

North side
South side
East side
West side (parking area 47x131mt)

1 Service Area

Midi Marquee (West side)

Optional

Grande Marquee (West side)
see on page 24

Areas

Grande Marquee 60x30mt
Midi Marquee 30x15mt
Petite Marquee 25x15mt

TECHNICAL DETAILS

As the largest indoor venue in Malta, MFCC can be used as one large hall, with 8,500sqm of uninterrupted space, plus an additional 1050sqm of adjacent space. Alternatively, the venue can be divided into smaller halls and/or seminar theatres to suit the requirements of the client. MFCC gives organisers the flexibility to create an event with easy access for all.

AREA ground	Over 20,000 sqm
AREA TFS	8,500 sqm inside the TFS 10,300 sqm including foyers and marquee
TFS length	170 meters
width	50 meters
max height under ceiling	16.50 meters
max height under arch low points	12.00 meters
FLOOR COVERING	Smooth levelled concrete
FLEXIBILITY	Arches can be moved along the length of the venue
COVERING OF THE VENUE	Double skinned roof with black interior and silver exterior
TRUCK ACCESS	From the South Entrance Gate
UTILITIES	Via access points located on the perimeter and on the floor
ELECTRICITY	3 Phase Power Supply and stand by generators
WATER	Via access points on the floor throughout the venue
WIFI	WiFi is available in all areas with upgradable bandwidth
IT	Public WiFi with upgradable bandwidth
CLIMATE	Full temperature control system
RESTROOMS	80 toilets available in the TFS
ACCESSIBILITY	Wheelchair access
PARKING	Parking space available for 400 cars
SAFETY	30 emergency exit doors within the main structure and additional emergency exits to the adjacent tents.

3 entrances

North, South and West

4 Foyers

modular

10,300sqm

total inside area

4 Halls

TFS

Grande Marquee
(optional see on page 24)

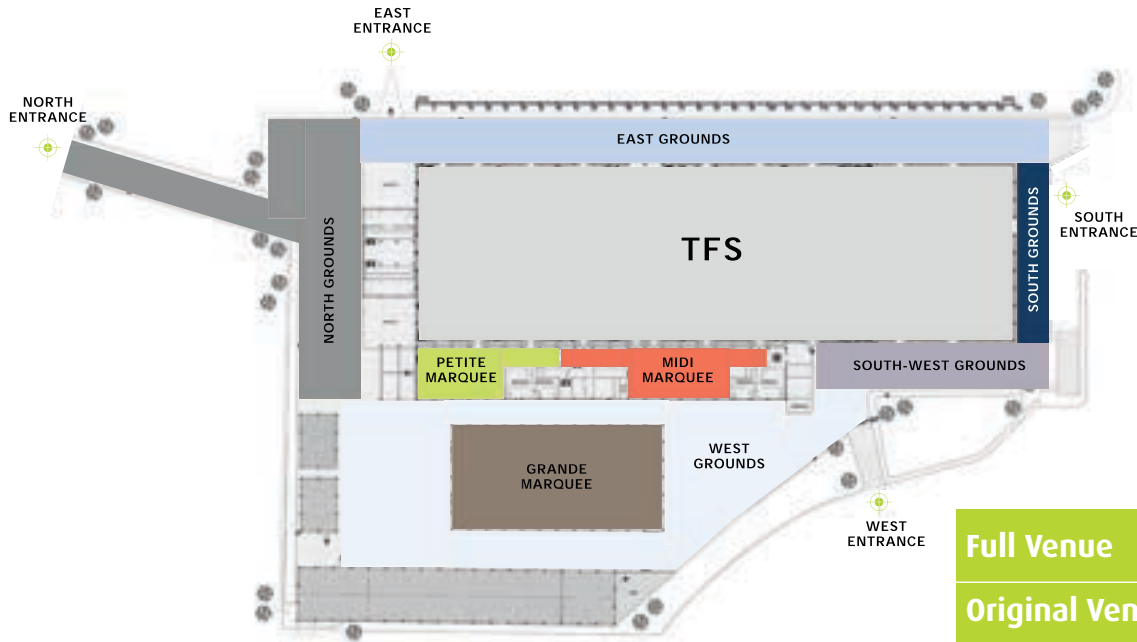
Midi Marquee
(service area)

Petite Marquee



THOMAS COOK

AREA & CAPACITY



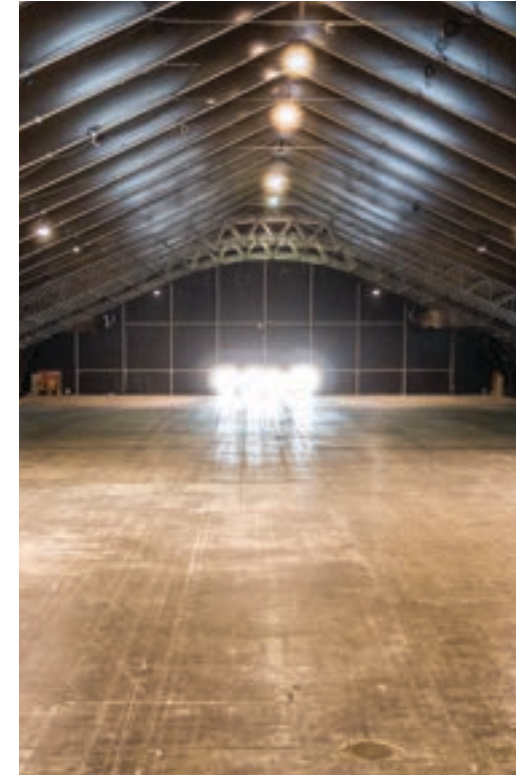
TFS PART AREAS			
	Area	Seated	Standing
Full Venue	7250m ²	10286	14500
Original Venue	5250m ²	7390	10500
Part Venue	3000m ²	3504	3500

Note: Above areas exclude the area taken up by stage

	AREA			CAPACITY		
	area sqm	length mt	width mt	theatre	banquet	reception
TFS MAIN AREA	8,500	170	50	10,286	4,000	14,500
NORTH FOYER	225	15	15	-	-	380
PETITE MARQUEE	375	25	15	323	130	640
PETITE MARQUEE (OUTSIDE)	150	10	15	-	-	250
MIDI MARQUEE	450	30	15	374	150	750
GRANDE MARQUEE OPTIONAL (SEE ON PAGE 2)	1,800	60	30	2024	760	3000
TOTAL AREA (INSIDE & OUTSIDE)	20,000					



TENSION FABRIC STRUCTURE (TFS) AND GROUNDS



INSIDE THE TFS



PUBLIC PARKING SPACE



EVENT INSIDE THE TFS



ORIFLAME





ORIFLAME



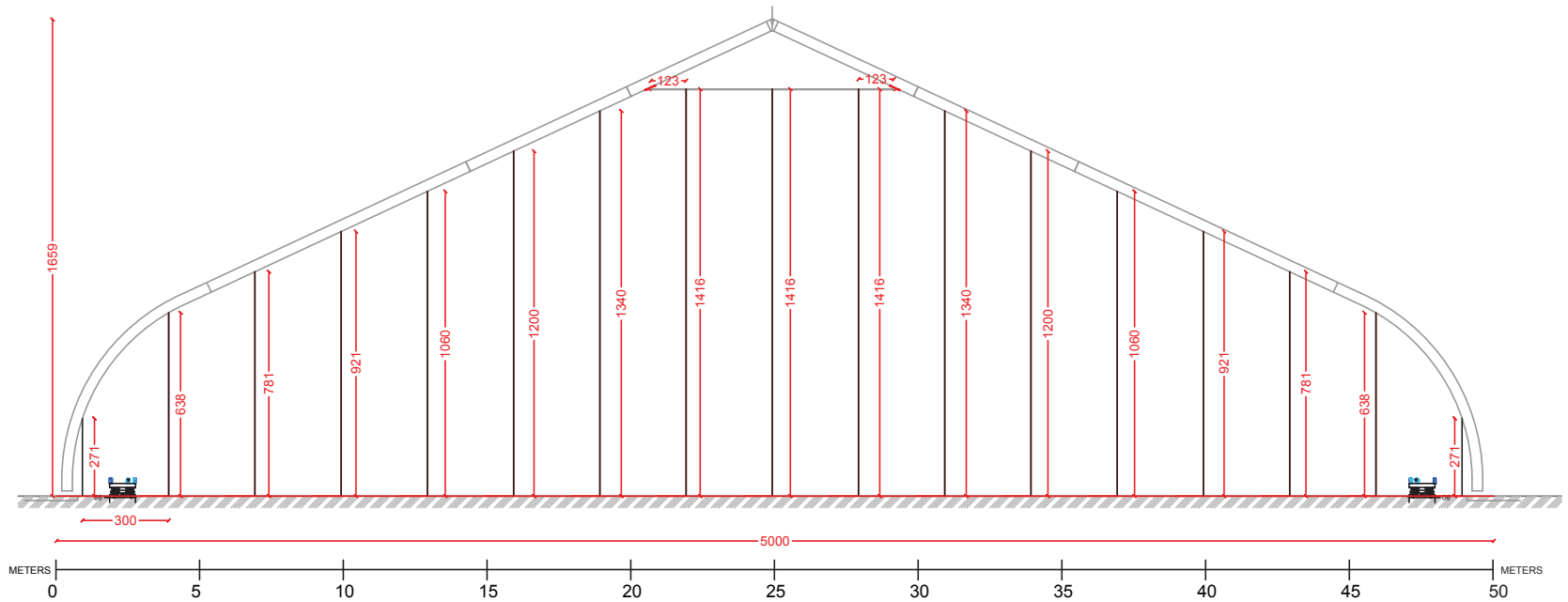


MICHAEL MCINTYRE



FLYING SUPERKIDS

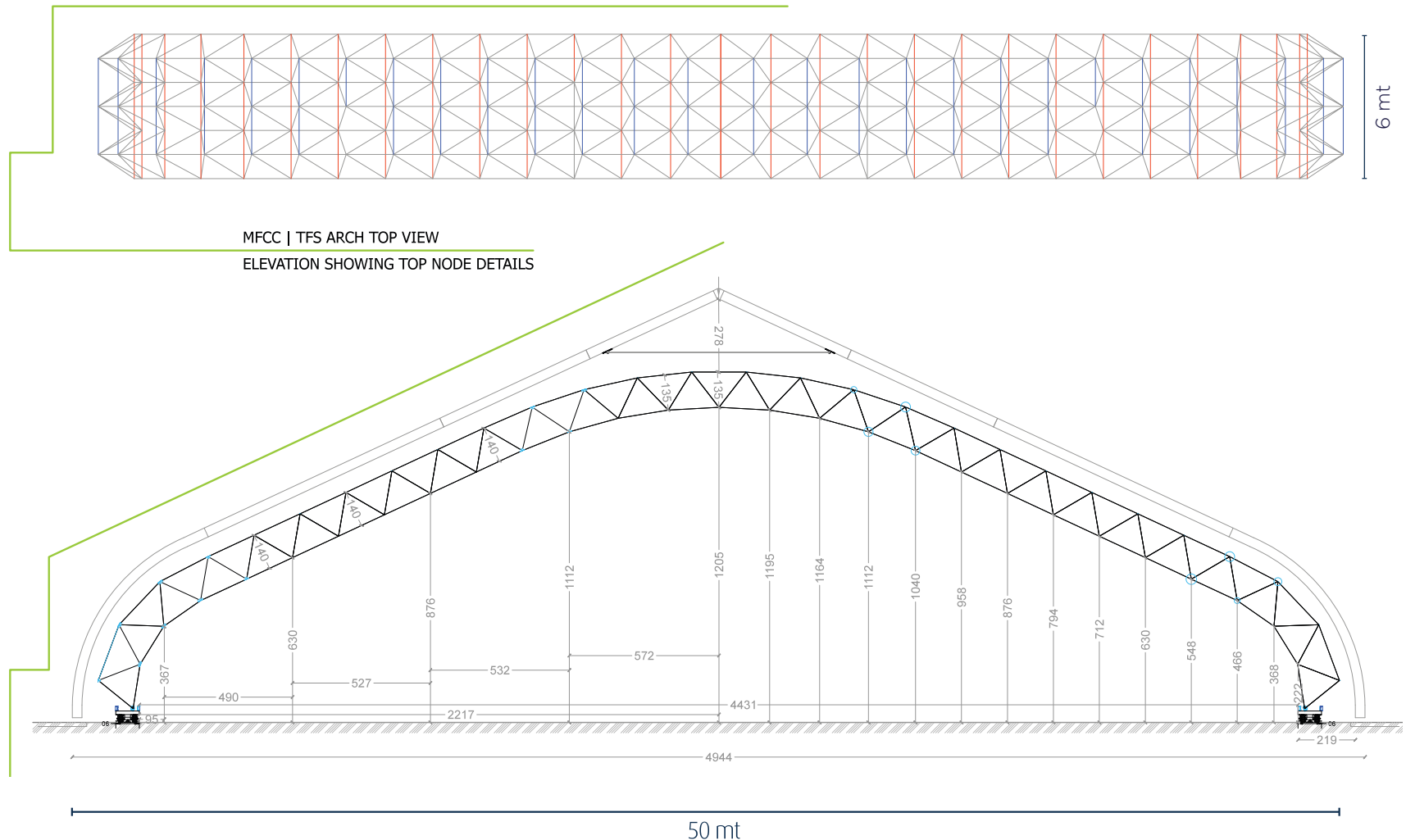
TFS HEIGHT VARIATIONS



ARCHES

The TFS is provided with 3 load-bearing steel structural arches that can take a load of 30 tonnes each.

These structures can be moved along the entire length of the venue, giving you the possibility and the flexibility to design stands and setup stages in any position and orientation.





ARMIN VAN BUREEN'S CONCERT



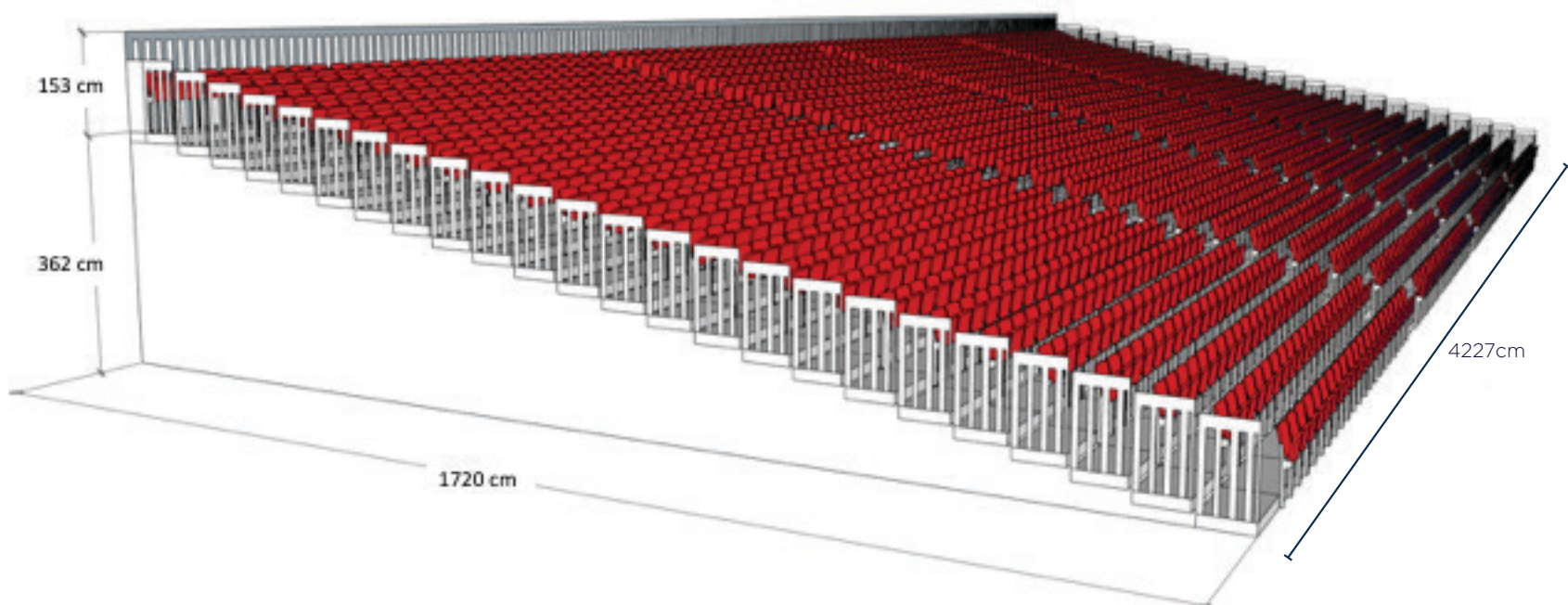
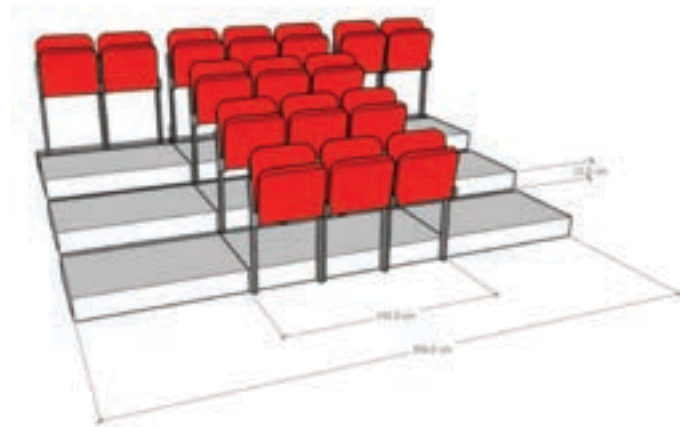
MALTA SONG FOR EUROPE

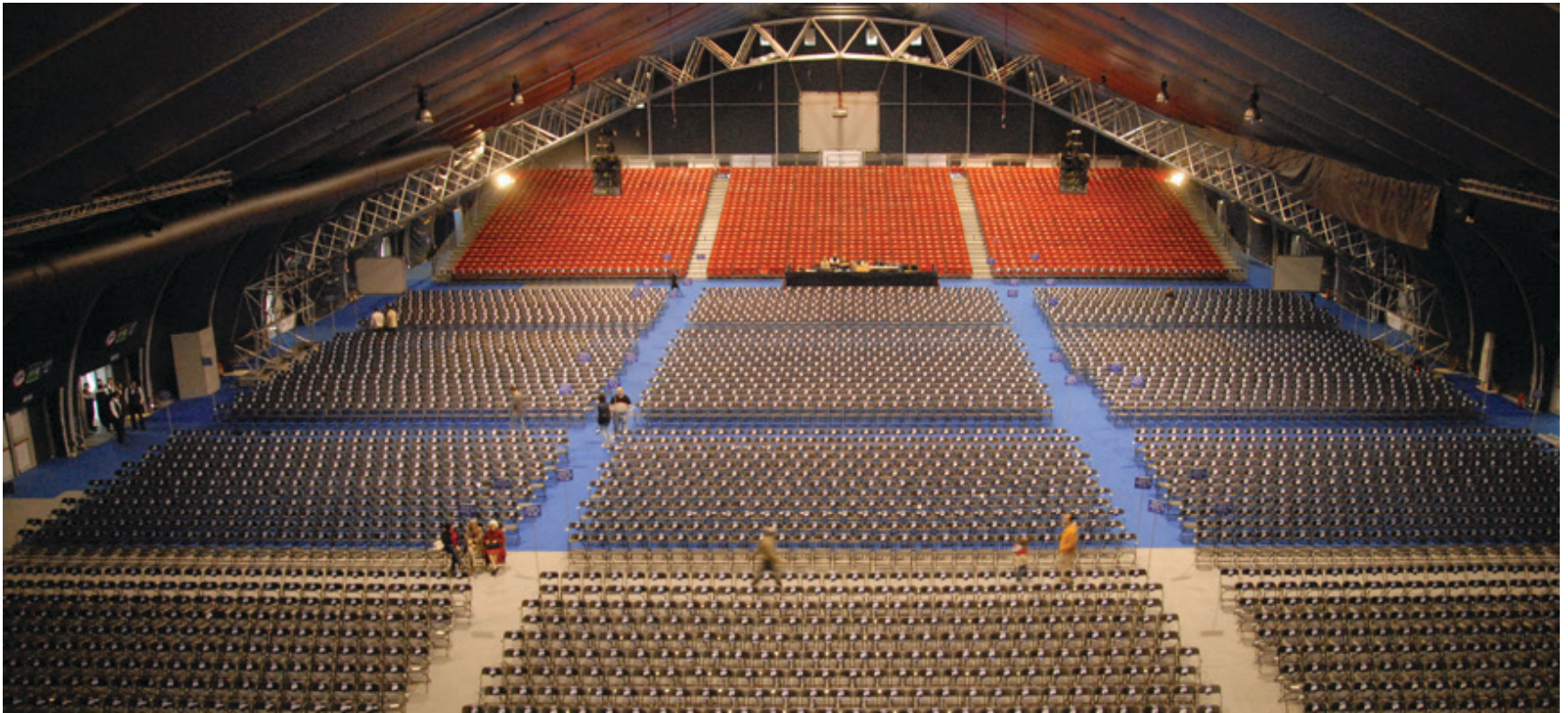


GENSNA

TIERED SEATING

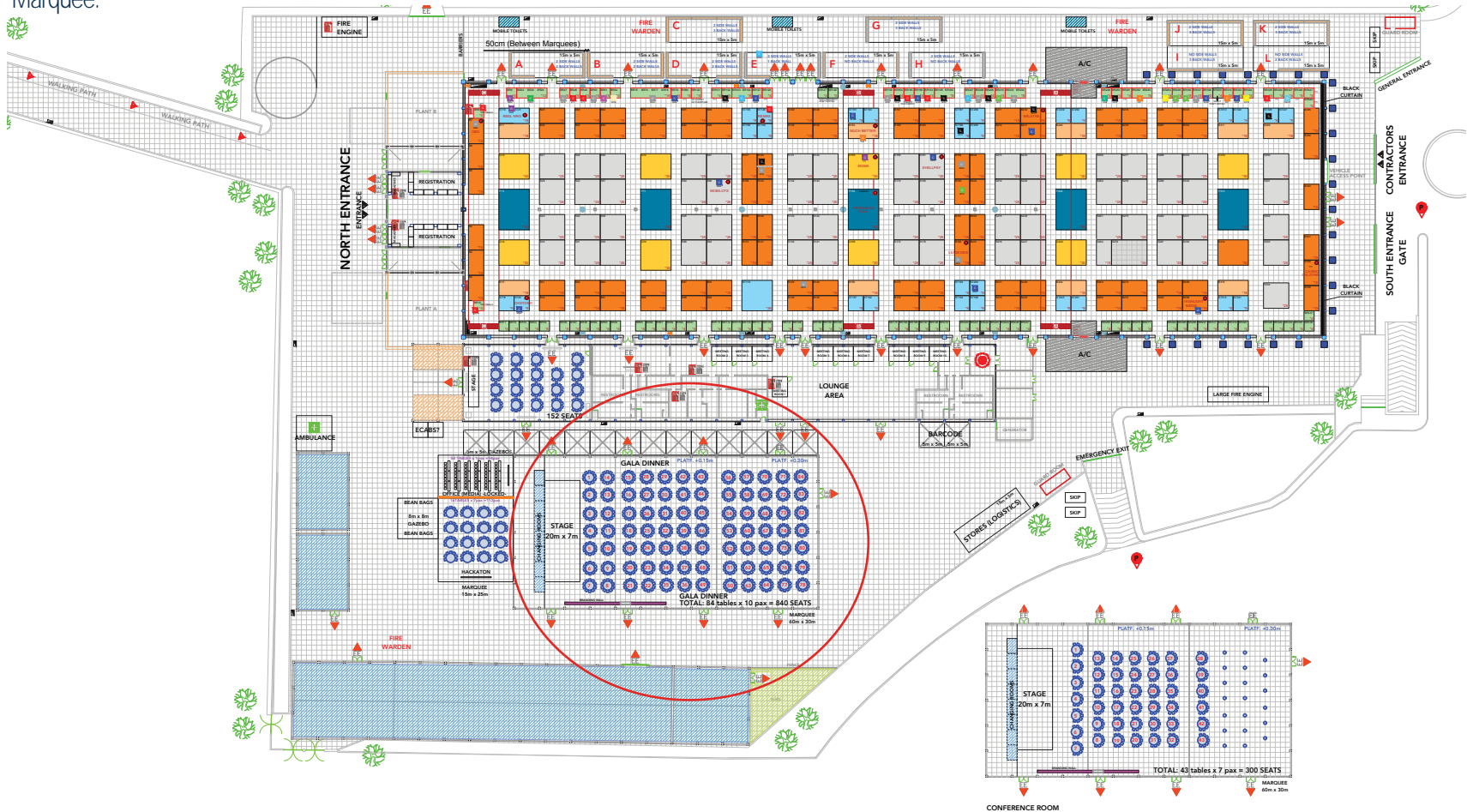
DIMENSIONS		CAPACITY	
Width	34.1m	Total Seats	1950
Length	17.2m	Minimum Possible	16
Height	3.72m	Minimum possible in each column	3
Handrail	1.53m	Minimum row possible	4
Total Height	5.25m	Maximum columns in each block	21
Step Height	0.15m	Maximum rows	25
Step Depth	0.70m	Setup for maximum seating	21/18/18/21
Seat Depth	0.40m		
Seat Height	0.40m		





GRANDE MARQUEE (OPTIONAL)

The Grande Marquee offers additional indoor space to events requiring more such space. The example below shows a set-up (for SIGMA) using the Grande Marquee.



DIMENSIONS

60m x 30m

AREA

1800m²



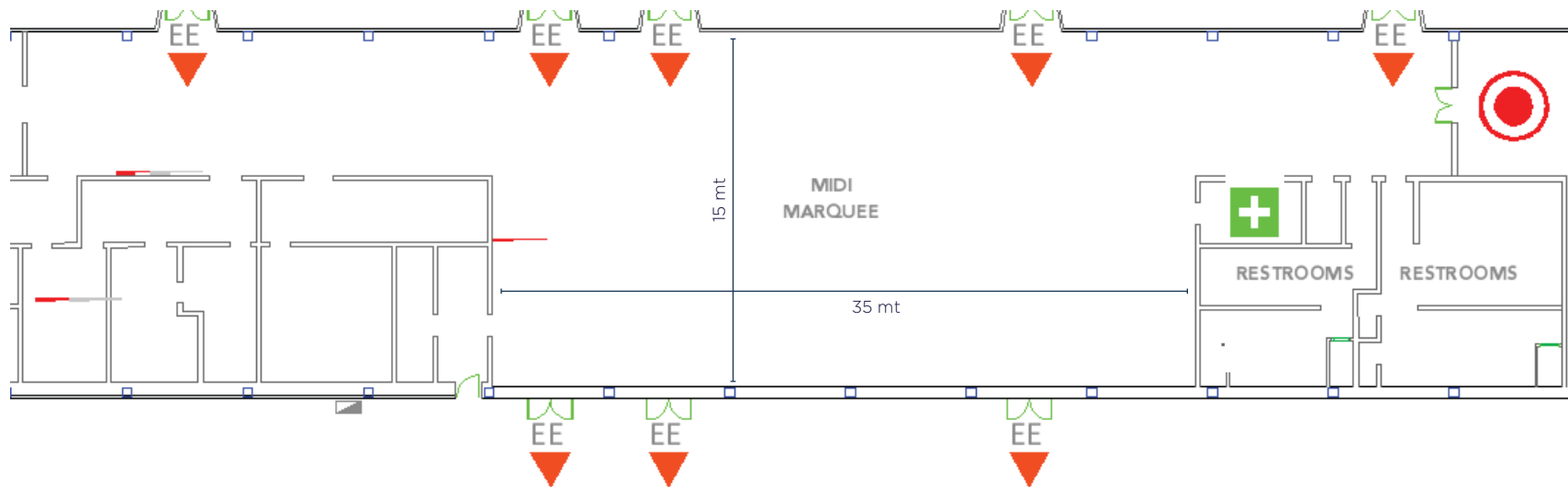
SIGMA CONFERENCE CENTRE



ESPORTS GAMING

MIDI MARQUEE

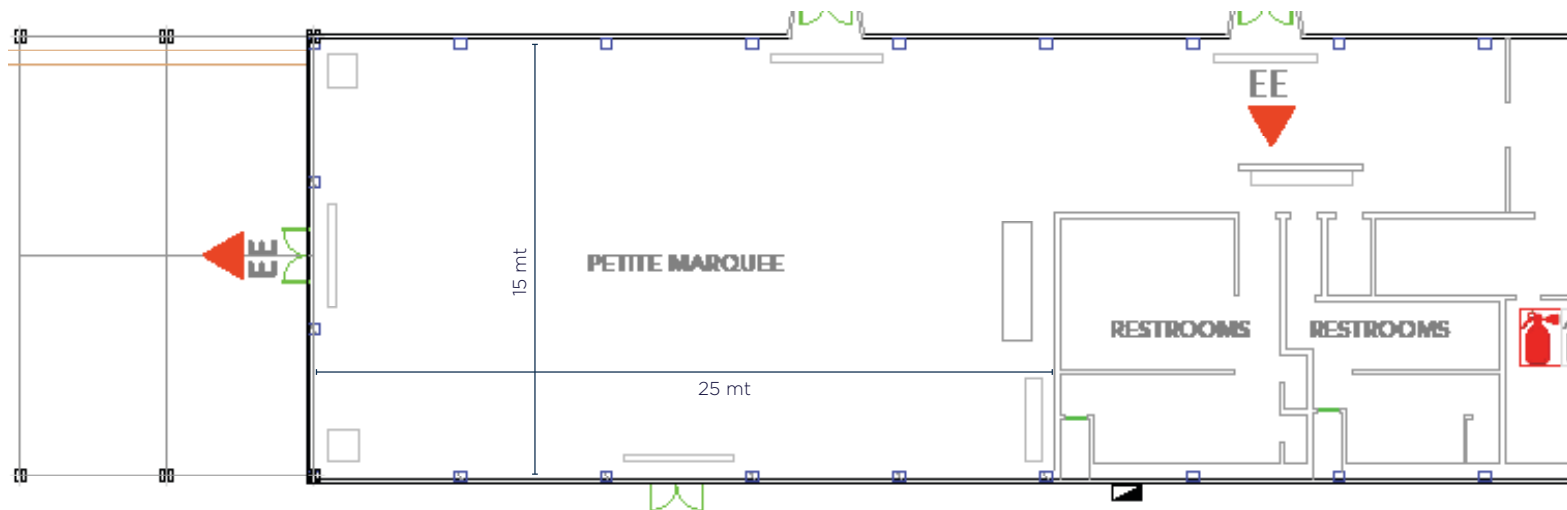
The Midi Marquee is an area adjacent to the main TFS which can be used independently as a venue, when events are of a smaller capacity. The total area is of 450sqm.





PETITE MARQUEE

The Petite Hall is adjacent to the MFCC venue, but caters for smaller functions. It is suitable for a function of up to 500 people. It is 375 sqm in area, has very easy access and is tastefully embellished to very high standards. It is also equipped with a catering area, lobby, stylish bar, and parking facilities. The hall is suitable for events such as weddings, private parties, product launches, conferences, incentives and events.





CONFERENCE - Exhibition and Plenary Area Set-up

The example shown here uses a theatre style set-up for 3000 pax and an internal and external exhibition area.



TOTAL AREA External and internal area
MAIN VENUE ACCESS North Entrance Gate and Midi Marquee
SETUP FOR 3,000 persons



AD CONGRES - STAGE



SEATING



SETUP

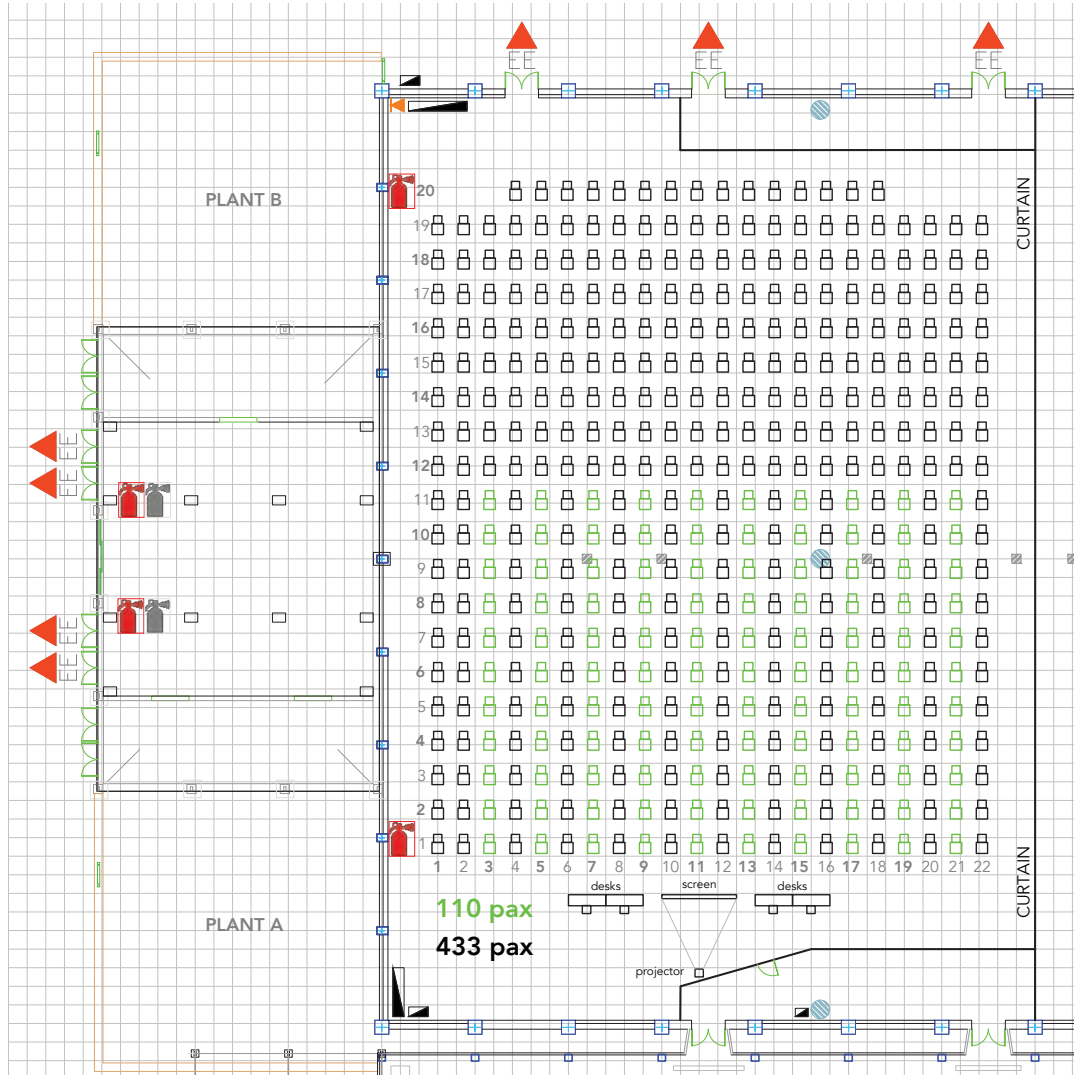


AD CONGRES



CONFERENCES / EXAMS

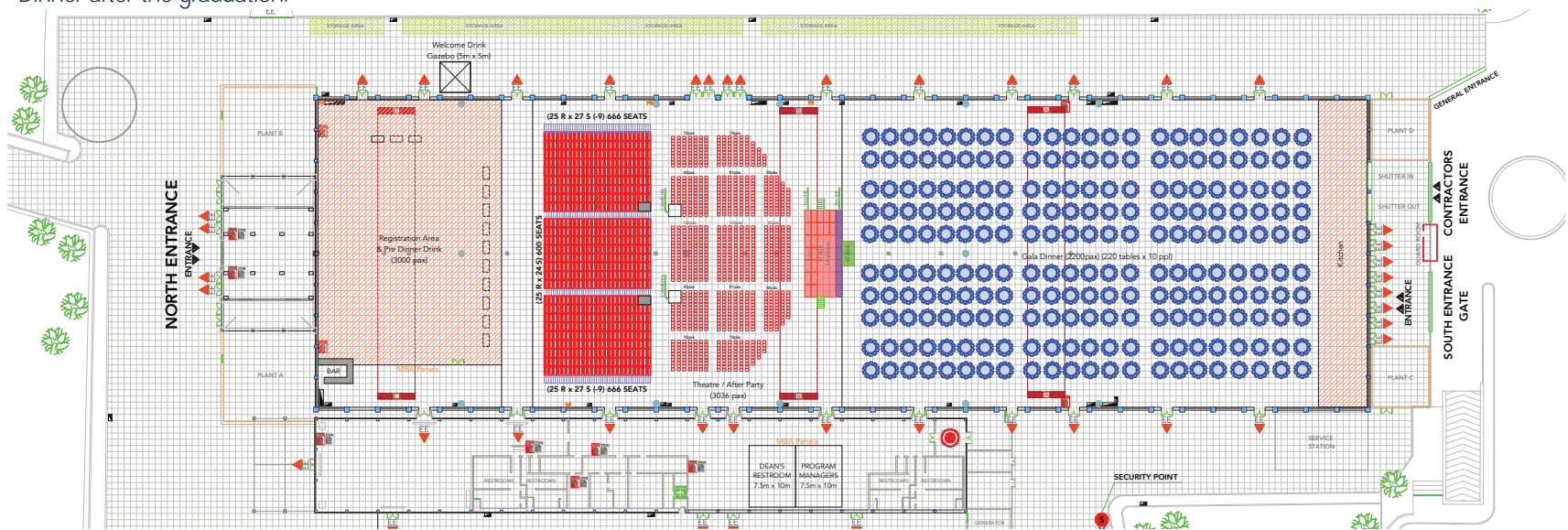
The multi-purpose dimension of the venue can be seen in the example below when part of the TFS is converted into an examination centre.



ACCA - SETUP

CONFERENCE - Theatre Style and Gala Dinner Set-Up

The TFS was adapted in 3 areas comprising Foyer/recreational area, Theatre Style and Gala Dinner for an International Graduation Ceremony. The ceremony was held in the theatre style area, the foyer was used for registration and recreational area together with the other areas. Delegates proceeded to the Gala Dinner after the graduation.



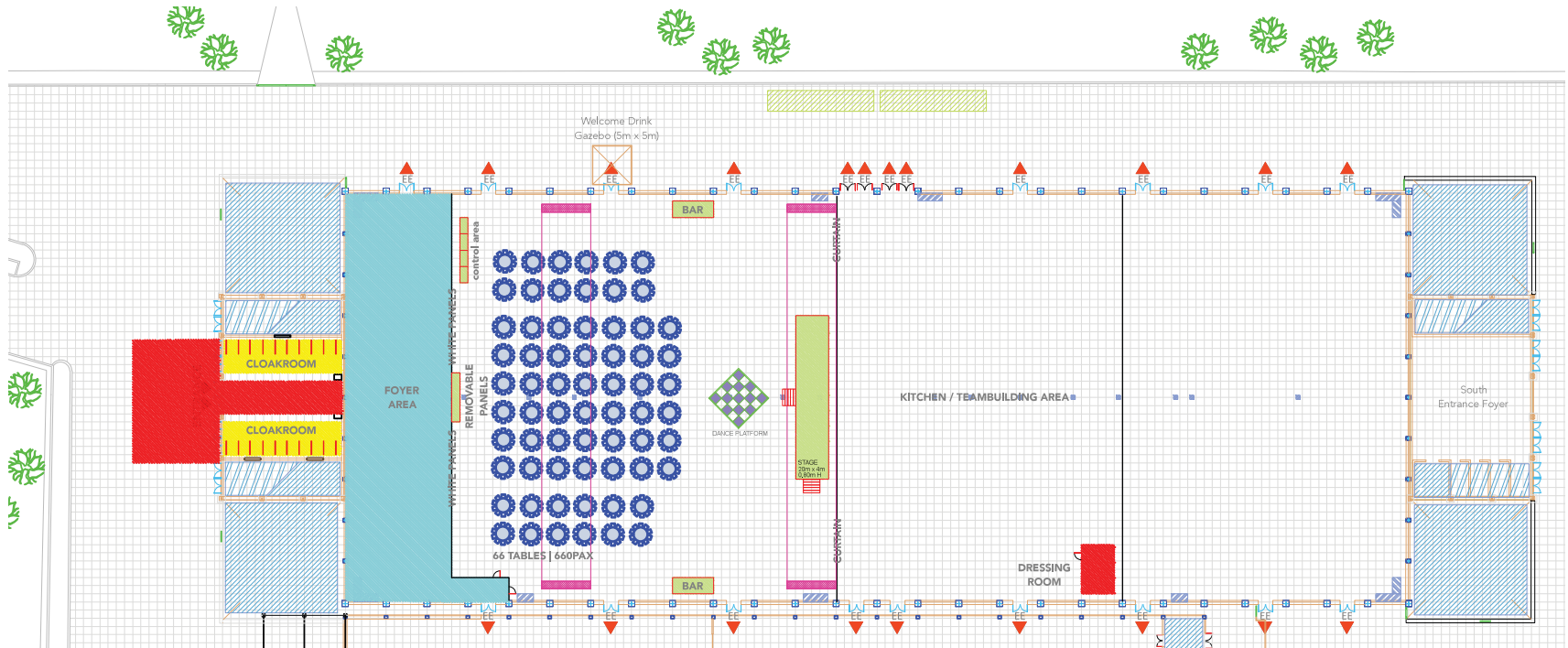


CEMS



CONFERENCE - Gala Dinner Set-Up

Part of the TFS is used for a Gala Dinner with large dance area and stage suitable for a large band. This to offer an enjoyable dinner, complete with entertainment and a suitably sized dance area



TOTAL AREA 3000 sqm of TFS venue

MAIN VENUE ACCESS North Entrance Gate and North Foyer

SETUP FOR 600 persons

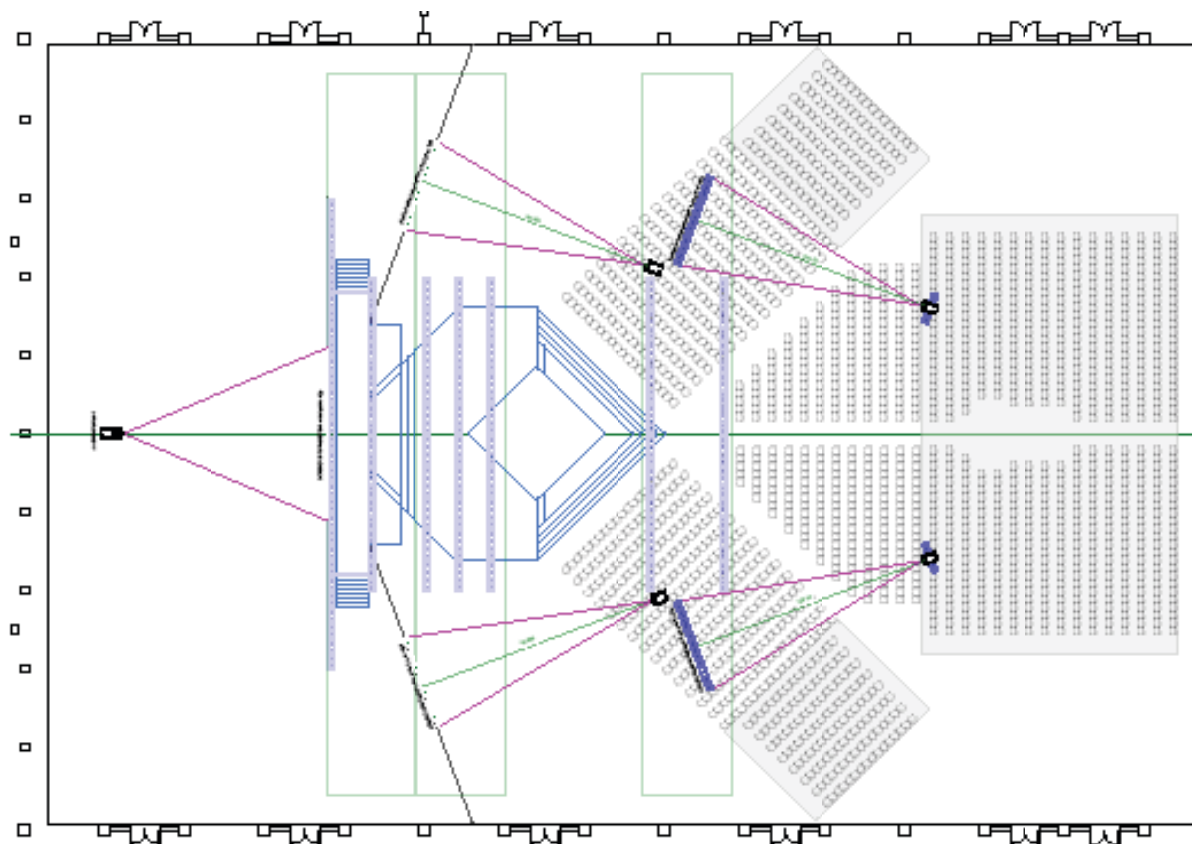


FISHER



CONFERENCE - Customised Theatre Style Set-Up

The below layout is an example of a specific customised conference set up in Theatre Style.



TOTAL AREA _____

3750sqm of TFS venue

MAIN VENUE ACCESS _____

North Entrance Gate and North Foyer

SETUP FOR _____

2,500 persons



L'OREAL



THEATRE STYLE SETUP



STAGE



NORTH ENTRANCE FOYER



NORTH ENTRANCE FOYER



NORTH ENTRANCE



EXHIBITION AREA



WELCOME AREA



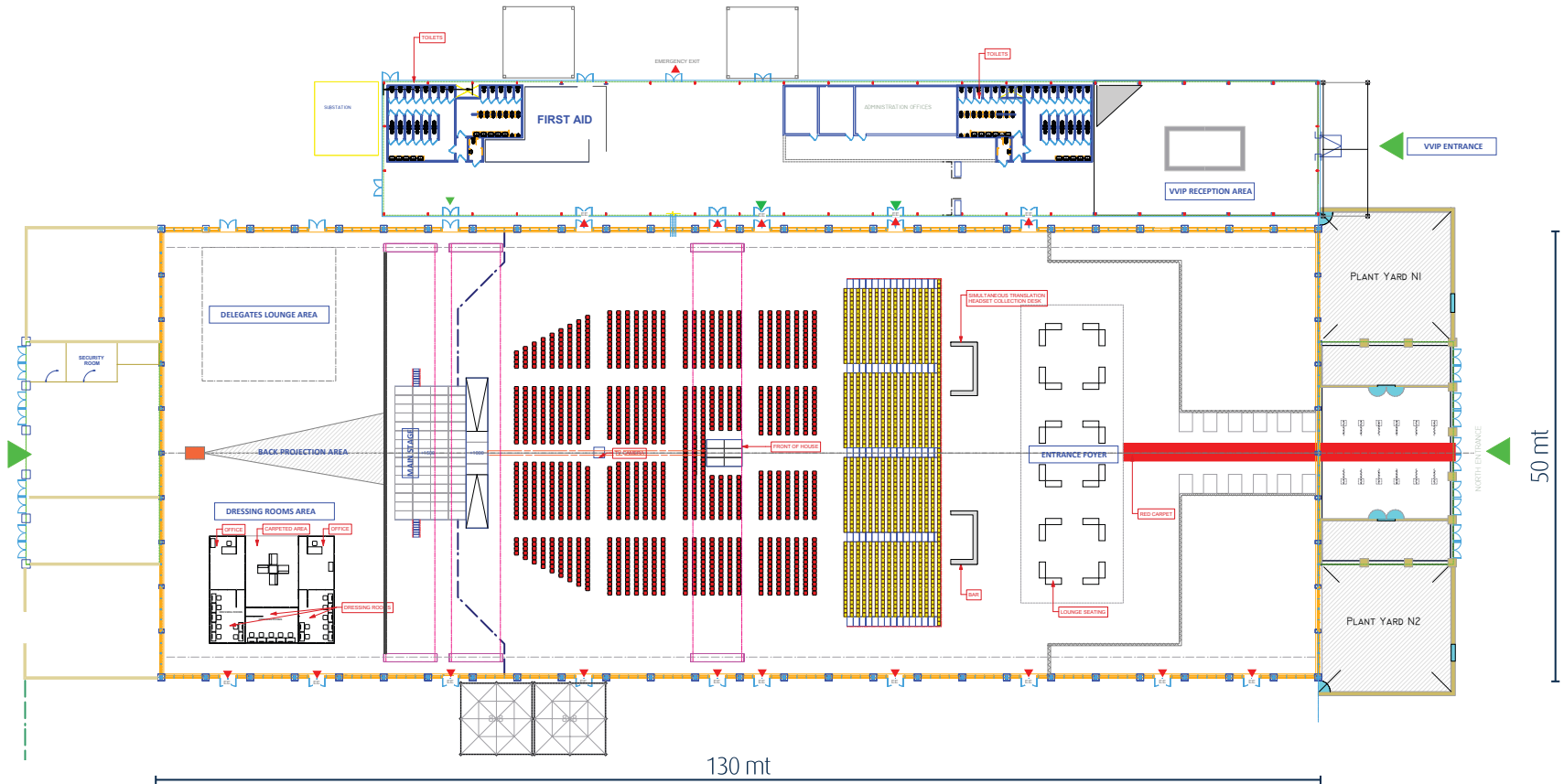
EXHIBITION AREA



EXHIBITION AREA

CONFERENCES - Theatre Style and Recreational Area Set-Up

The set-up below uses a large part of the TFS for the creation of a customised Theatre Style set-up which was used for the plenary. The area prior to the plenary is dedicated to a recreational area.



TOTAL AREA	6,725sqm of TFS venue
MAIN VENUE ACCESS	North Entrance Gate and North Foyer
SETUP FOR	2,700 persons [1,200 tiered seats and 1,500 flat seats]

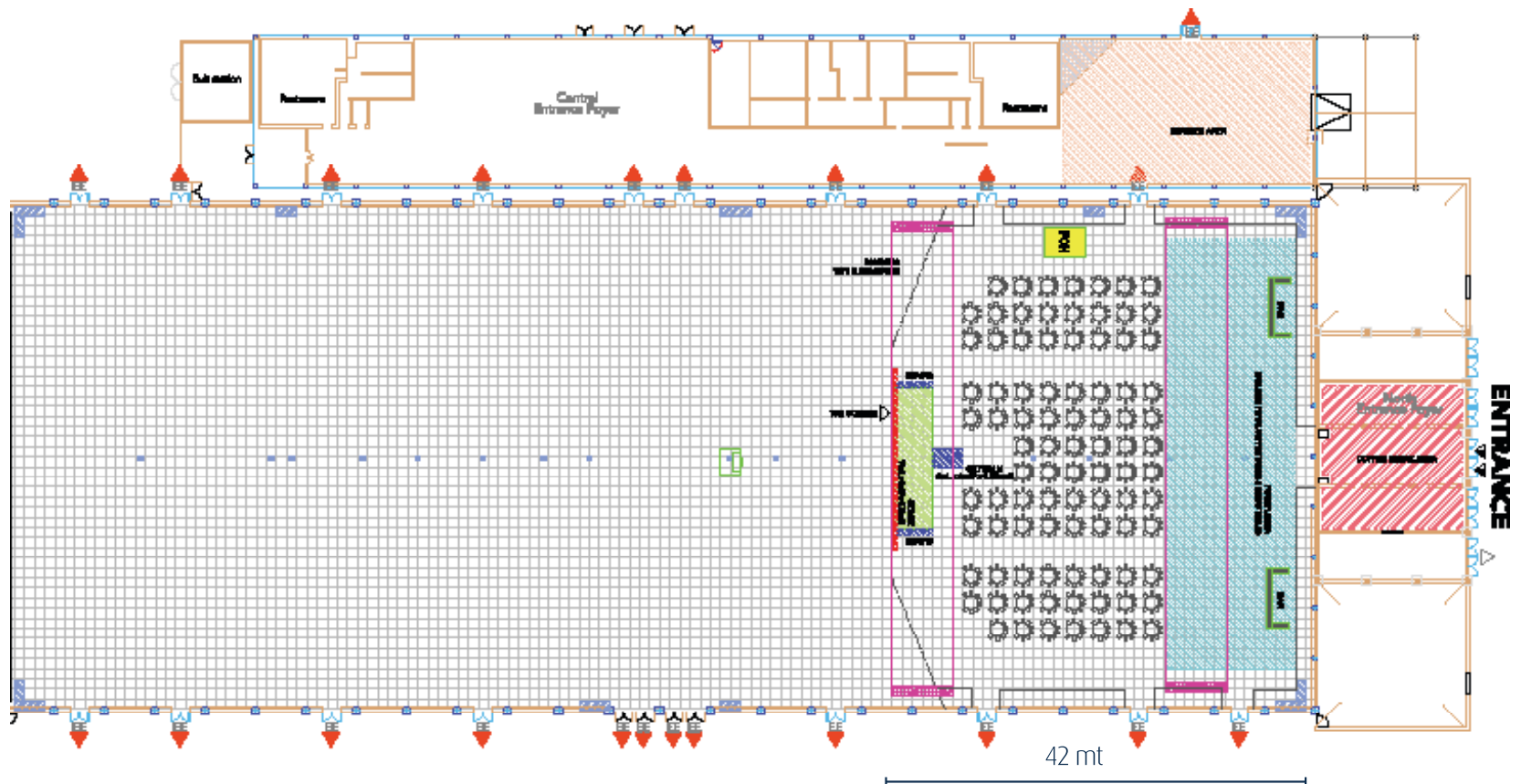


ICN CONFERENCE - THEATRE STYLE SETUP AND STAGE



CONFERENCES - Cabaret Style Set-Up

The below layout is an example of a setup using the area for a Cabaret Style conference for 900 persons. This shows how the venue can be used, in part, to accommodate numbers which do not require to use the TFS to full capacity.



TOTAL AREA	2,100sqm of TFS venue
MAIN VENUE ACCESS	North Entrance Gate and North Foyer
SETUP FOR	900 persons [conference setup]

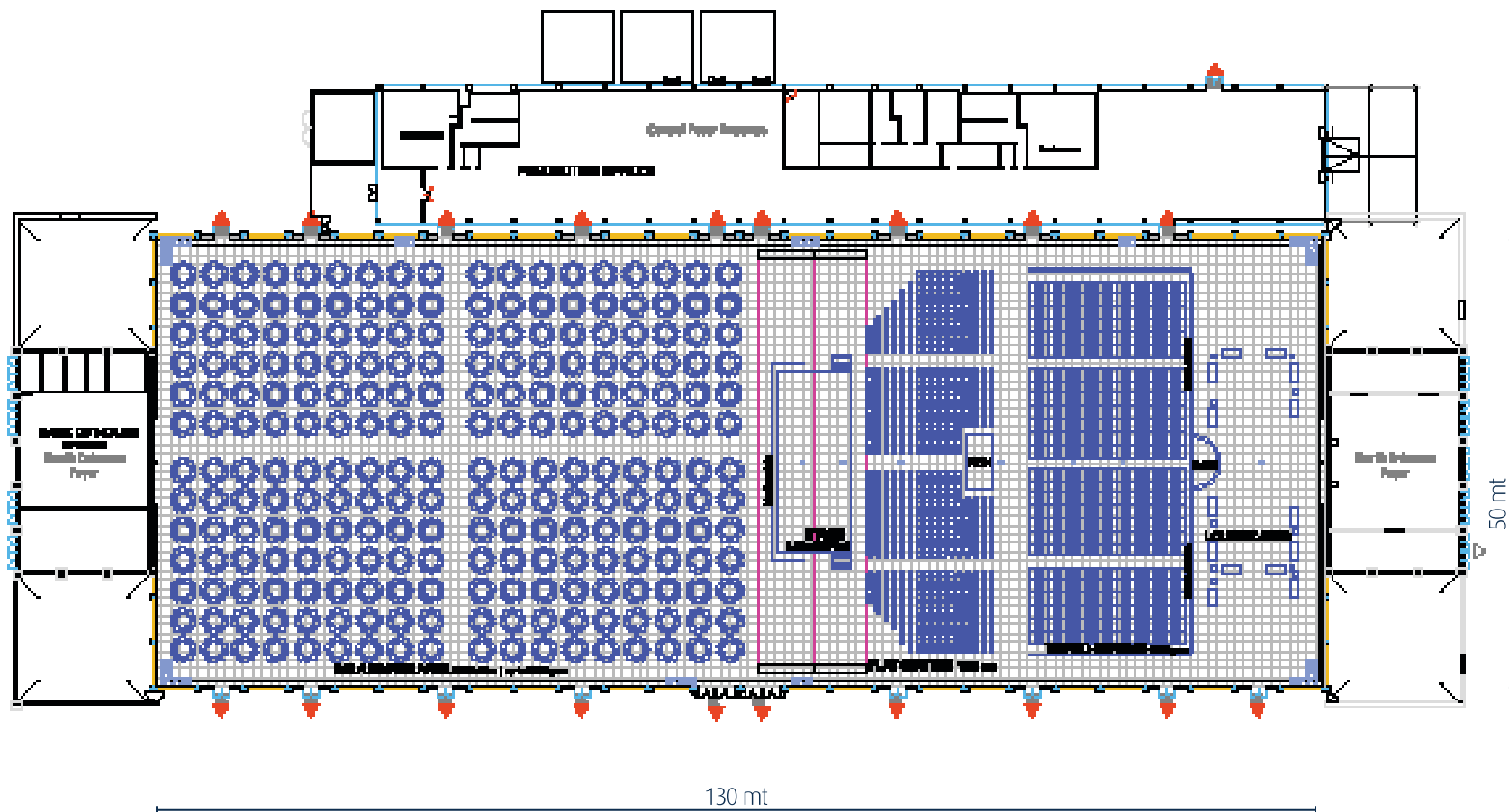


HSBC CONFERENCE - SETUP



CONFERENCES - Theatre Style and Gala Dinner Set-Up

The below layout is an example of a layout using the area for two types of functions; A gala dinner and a theatre set up for a conference.



TOTAL AREA _____

6,725sqm of TFS venue

MAIN VENUE ACCESS _____

North Entrance Gate and North Foyer

SETUP FOR _____

3,000 persons [conference setup] and 2,350 persons [gala dinner setup]

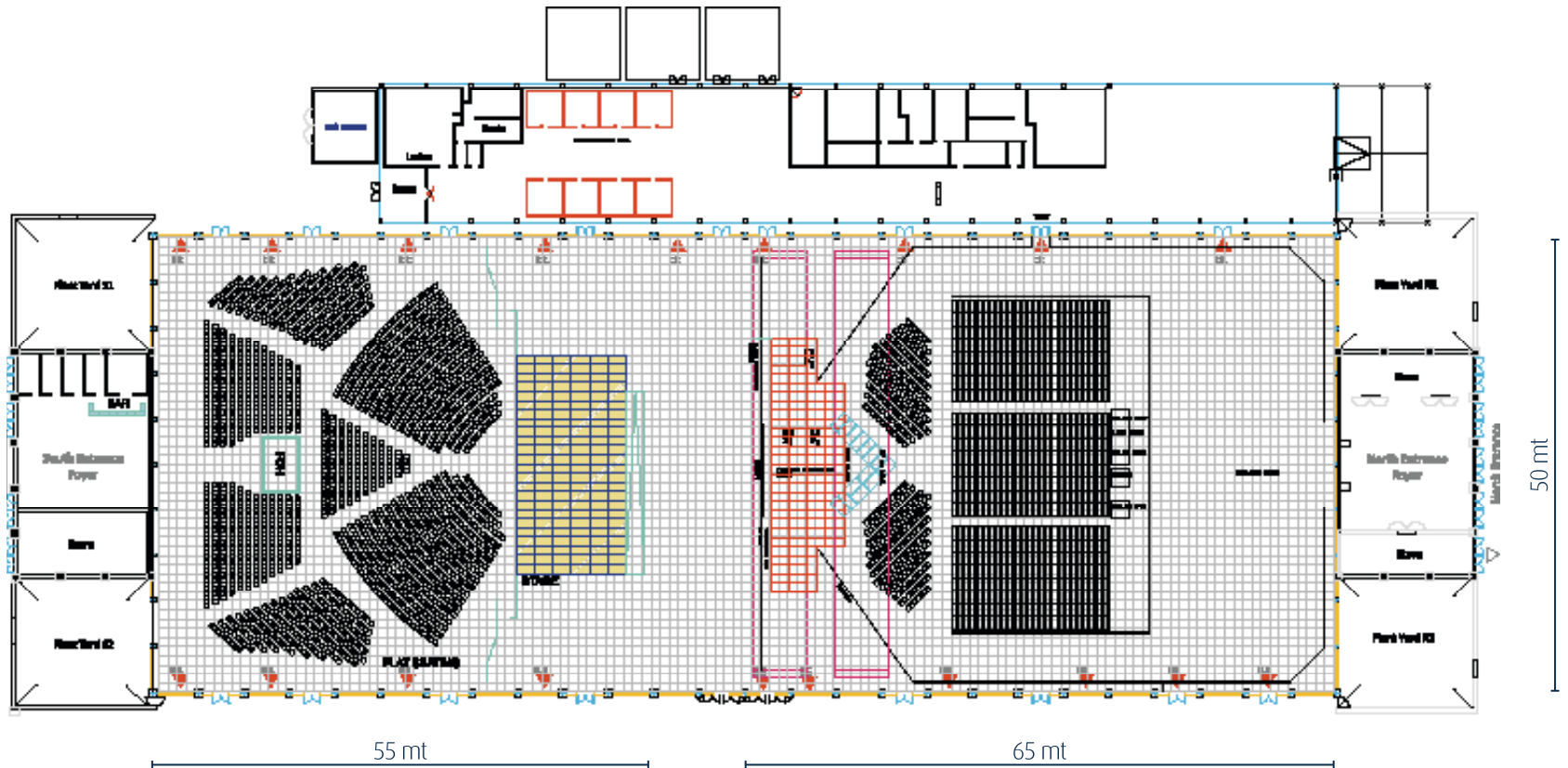


THOMAS COOK - SETUP



CONFERENCE - Back to back event Set-Up

The TFS can be set-up for dual events taking part on the same day, with different timings. The example below shows two set-ups in Theatre Style used for different events held on the same day.



TOTAL AREA

7,500sqm of TFS venue

MAIN VENUE ACCESS

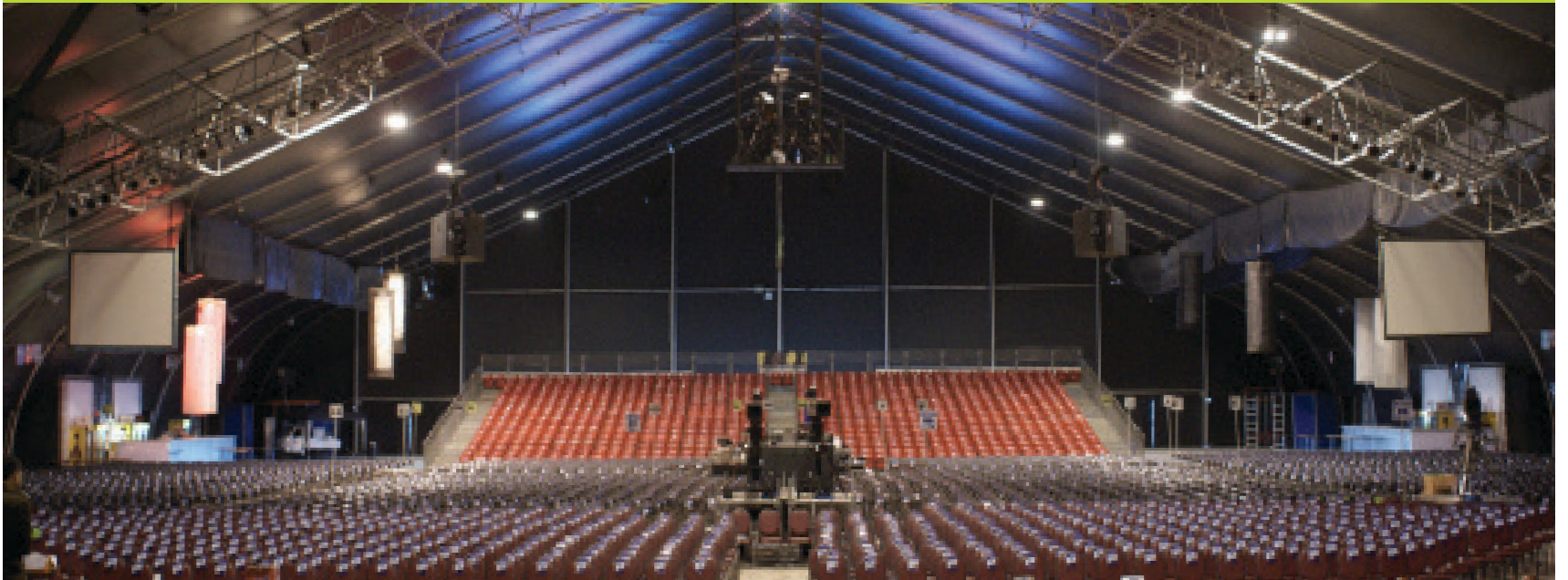
North and South Entrance Gates and North and South Foyers

SETUP FOR

2,200 persons [conference setup] and 2,000 persons [show setup]



MALTA SONG FOR EUROPE



EXHIBITIONS - Malta Trade Fair

MFCC organises the largest commercial event in Malta – The MFCC Malta Trade Fair. This is a consumer fair, held over 11 days. This event uses all of the MFCC foothold. Both external and internal areas are used to set up this large international event which features around 300 exhibitors. The fair attracts around 100K visitors.



TOTAL AREA _____

approx 9000sqm of both TFS and grounds area

MAIN VENUE ACCESS _____

North and South Entrance Gates

SETUP FOR _____

over 250 exhibitors and over 100,000 visitors



MALTA TRADE FAIR





MALTA TRADE FAIR





MALTA TRADE FAIR



EXHIBITIONS - SIGMA

SIGMA is one of Malta's fastest growing Trade Shows. It is held in November and requires additional indoor space. The layout below shows how this space is created using the set-up of the Grande Marquee to provide the additional required indoor space. All the MFCC foothold is used in this event.



TOTAL AREA _____ 11500 sqm internal space
 MAIN VENUE ACCESS _____ North Entrance Gate and North Foyer
 SETUP FOR _____ 12500 persons



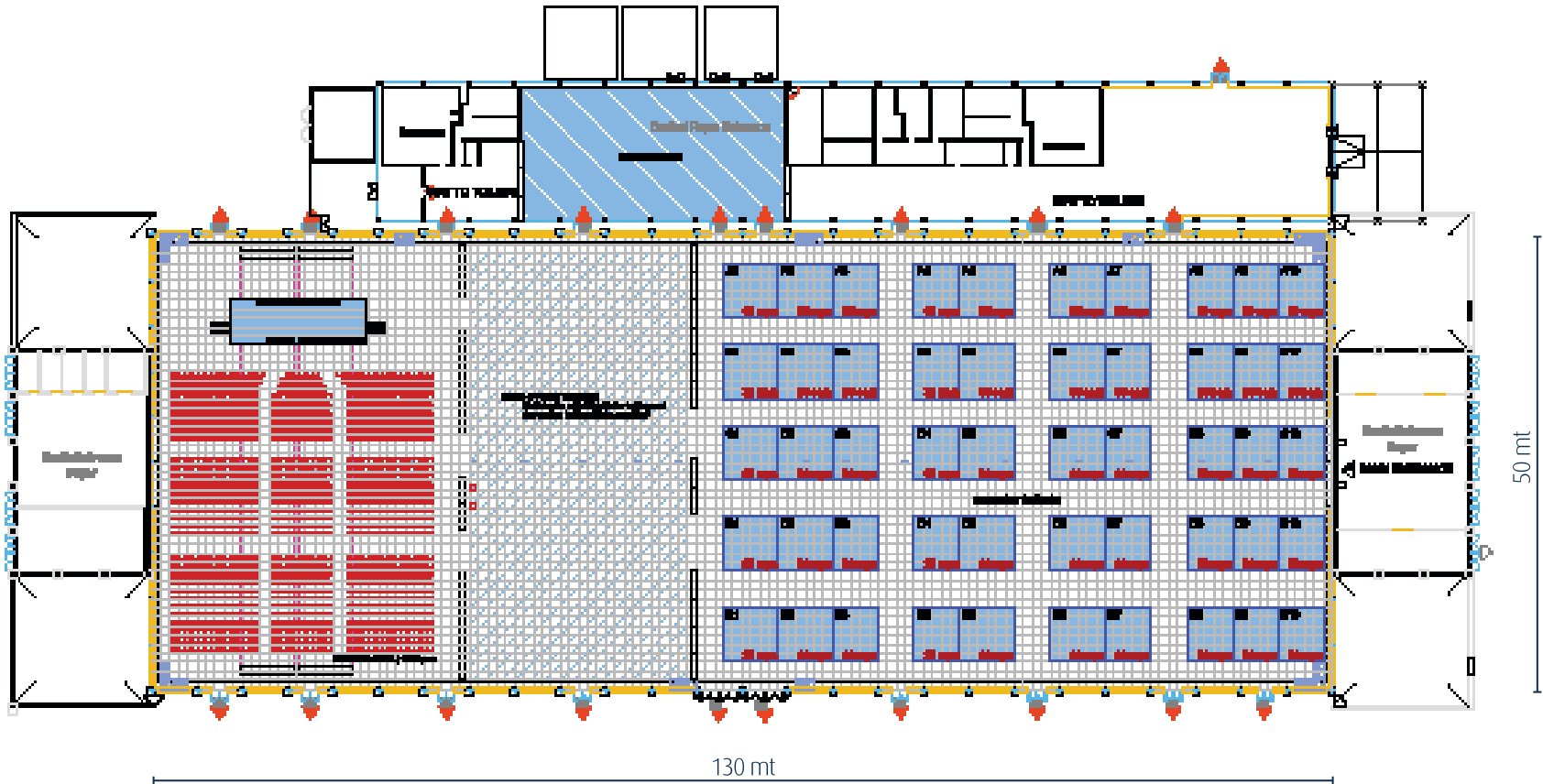
SIGMA





EXHIBITIONS - with Seminar and Recreational areas

In the below example the TFS has been split in three areas: seminar, exhibition and recreational areas.



TOTAL AREA

6,725sqm of TFS venue

MAIN VENUE ACCESS

North Entrance Gate and North Foyer

SETUP FOR

50 exhibitors and 1,200 persons [conference setup]



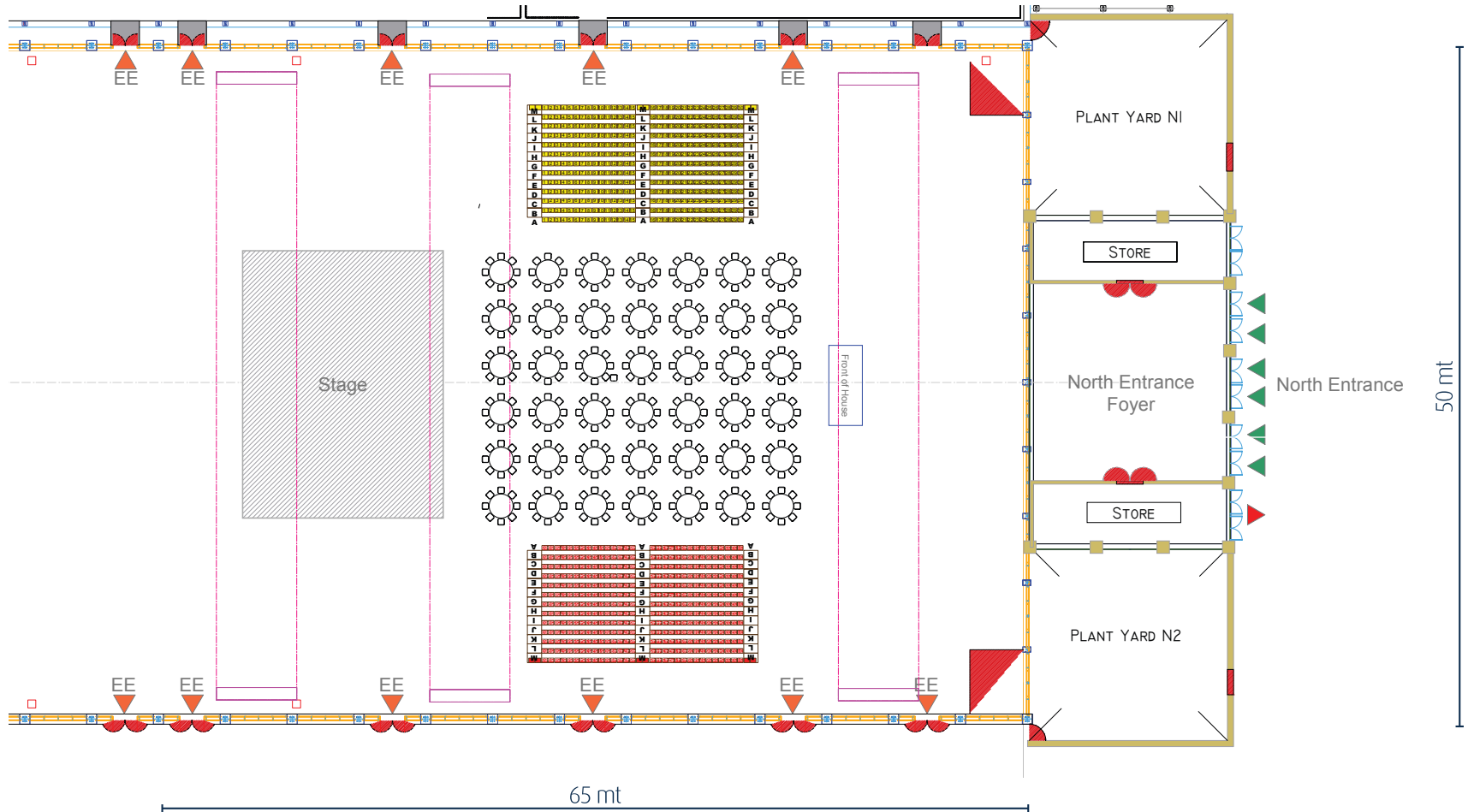
VOICES - SEATING



MALTA TRADE FAIR - SETUP

OTHER USE - Awards night setup

At MFCC we have hosted some of the most prestigious award shows held in Malta. These include the Malta Football Awards, the Malta Fashion Awards and many others.



TOTAL AREA _____

3,250sqm of TFS venue

MAIN VENUE ACCESS _____

North Entrance Gate and North Foyer

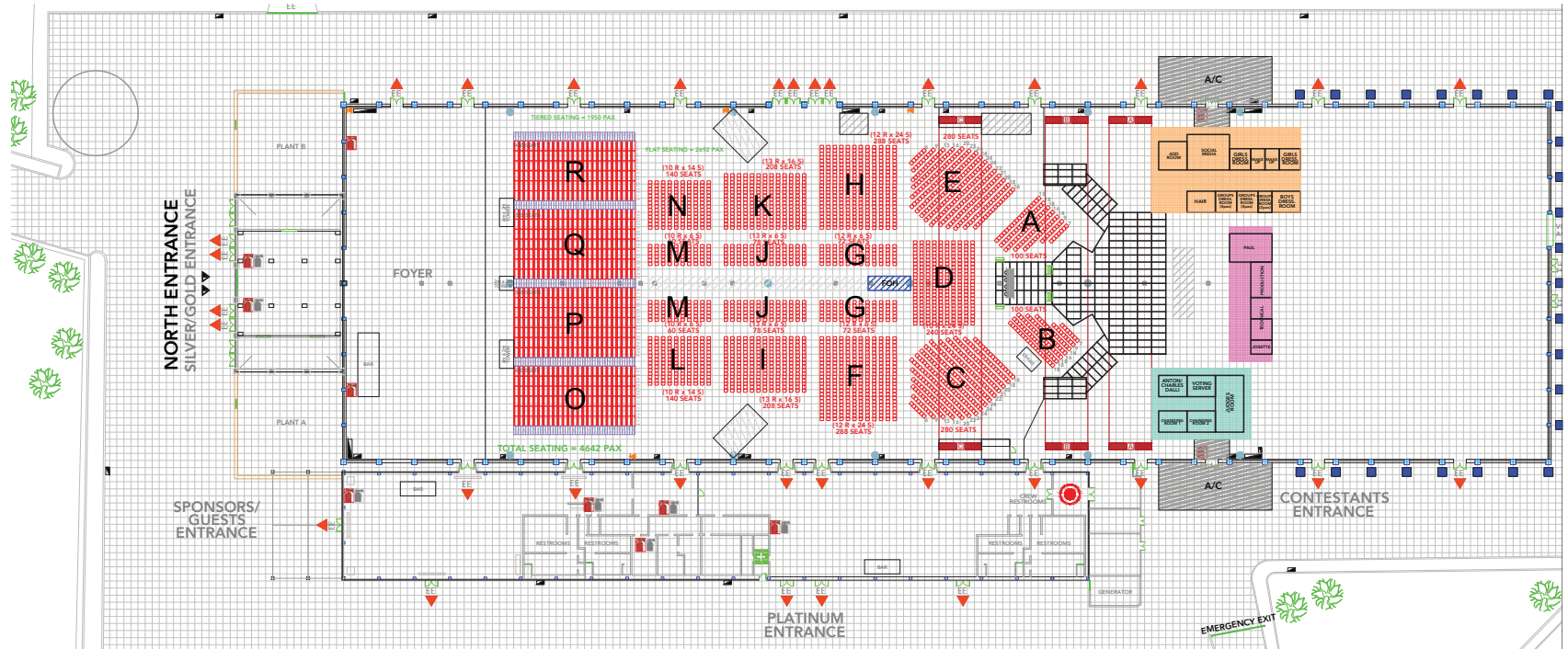
SETUP FOR _____

1,560 persons [tiered seating] and 3,350 persons [gala dinner setup]



MALTA FOOTBALL AWARDS GALA DINNER - SETUP

OTHER USE - TV Studio X Factor



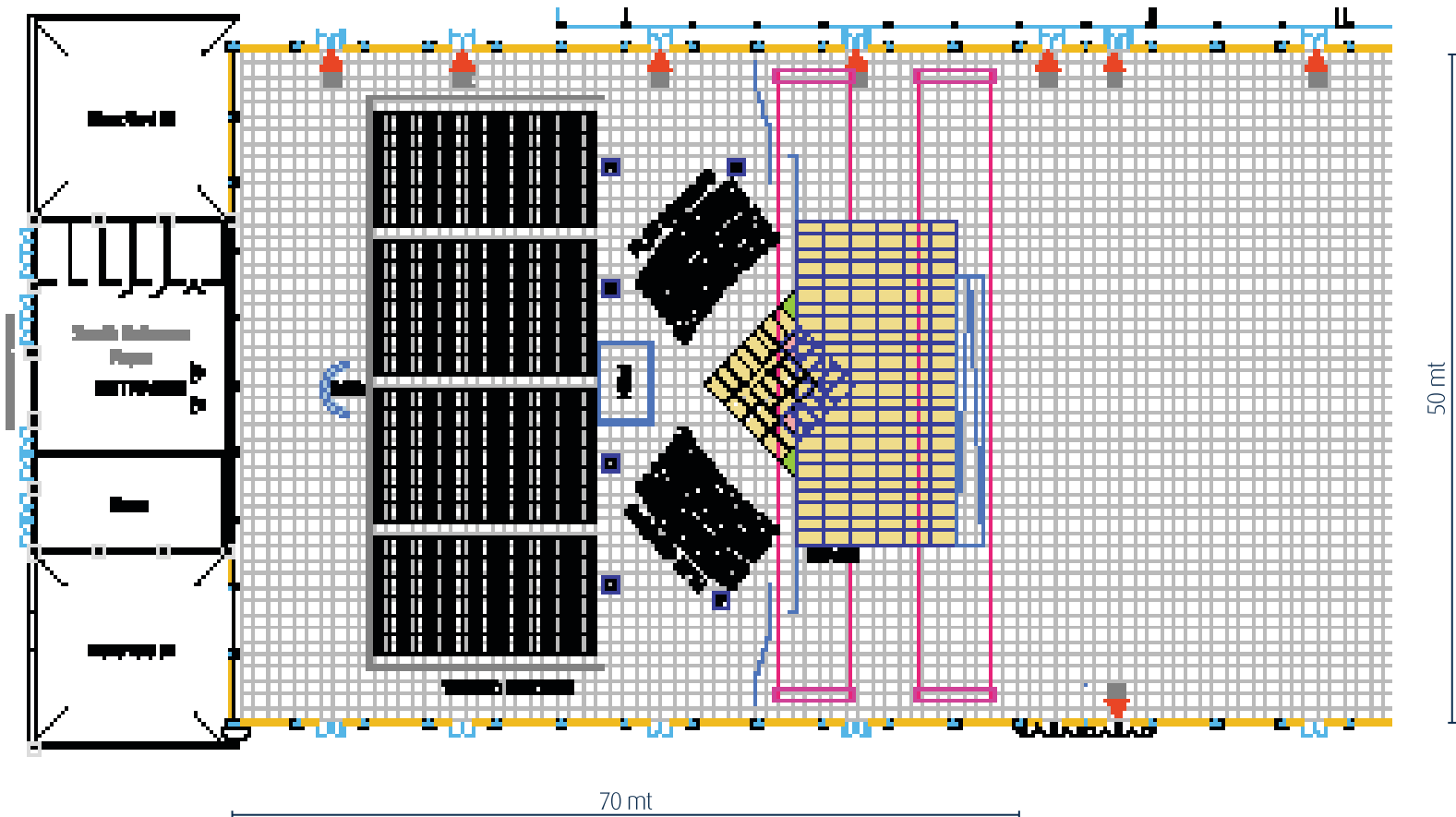


X FACTOR MALTA



OTHER USE - Small Theatre Studio Setup

The versatility of MFCC is proven, yet again, with the below example of the creation of a theatre style studio, which was used to record the act as a Live TV Show.



TOTAL AREA	3,500sqm of TFS venue
MAIN VENUE ACCESS	South Entrance Gate and South Foyer
SETUP FOR	2,200 persons

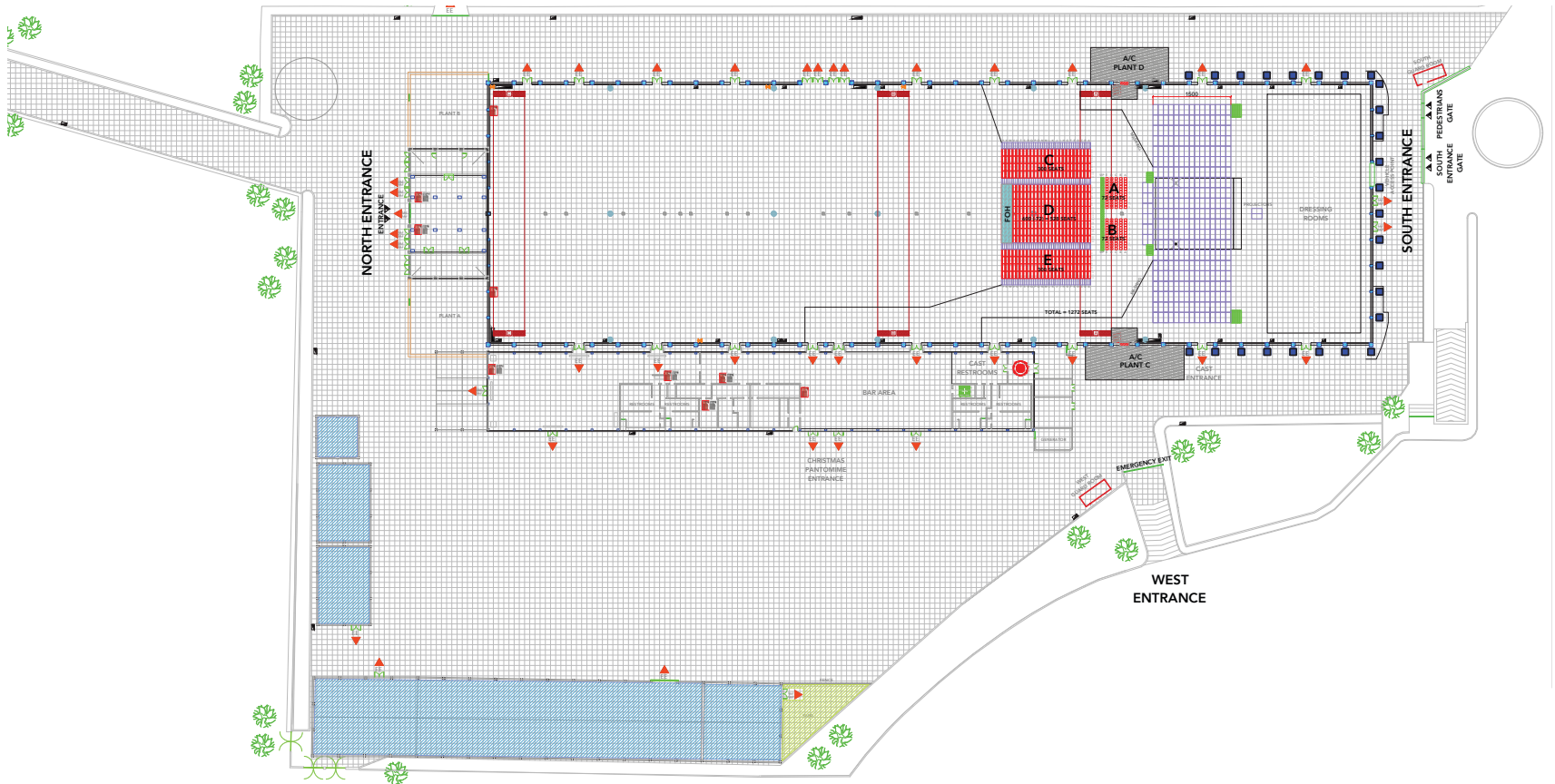


PHANTOM OF THE OPERA



OTHER USE - Theatre for Christmas Panto

MFCC is often transformed into a theatre for comedy and drama performances. The below is an example of such a set up.



TOTAL AREA	3750 sqm
MAIN VENUE ACCESS	Midi Marquee Entrance (West side)
SETUP FOR	1272 pax



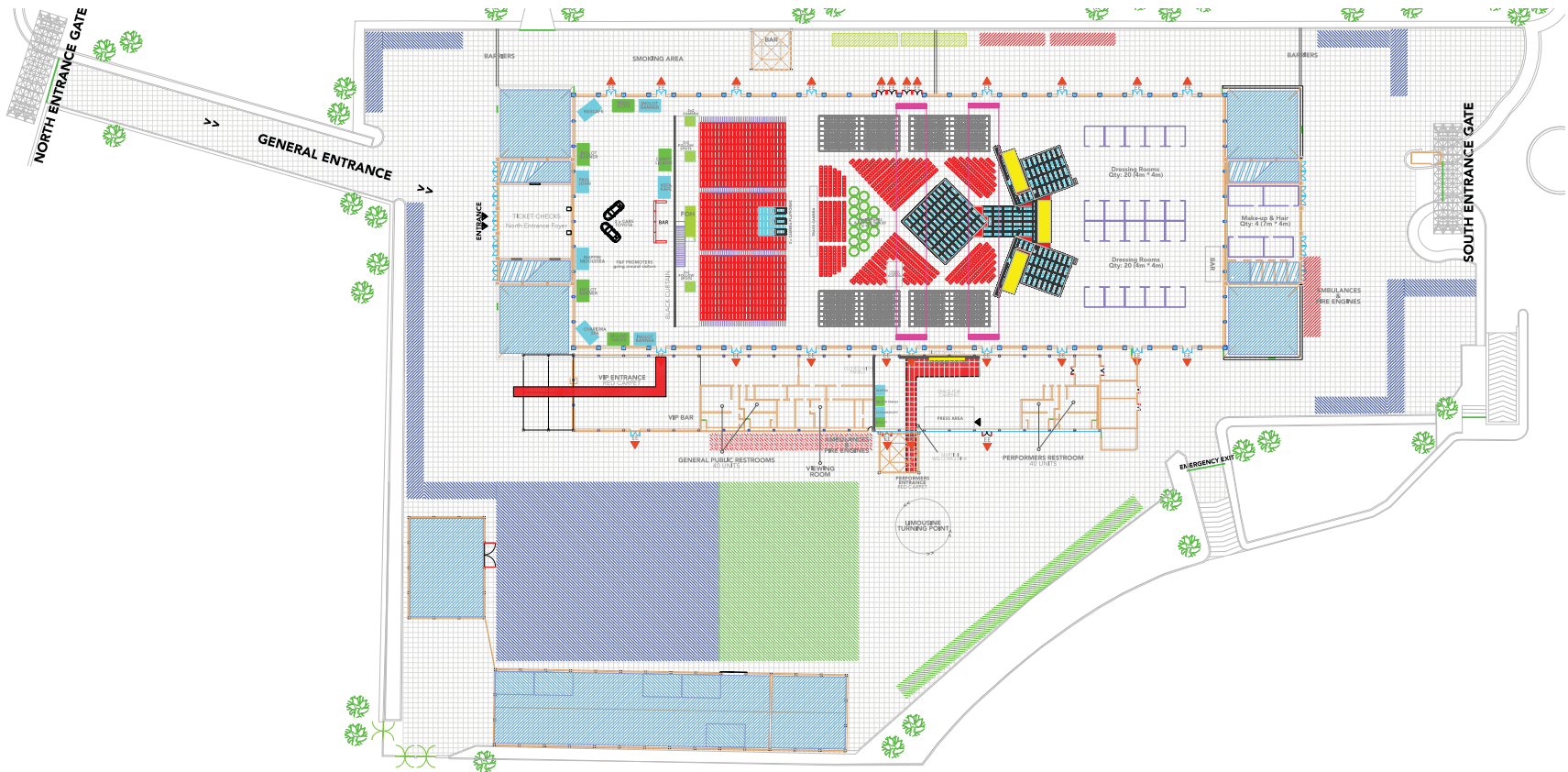
CHRISTMAS PANTOMIME



OTHER USE - Theatre and Studio

Malta Eurovision Song Contest

MFCC has transformed itself to host the prestigious Malta Eurovision Song Contest, the local show which chooses Malta's representative for the Eurovision Song Contest.



TOTAL AREA	All TFS
MAIN VENUE ACCESS	North entrance
SETUP FOR	3500 pax

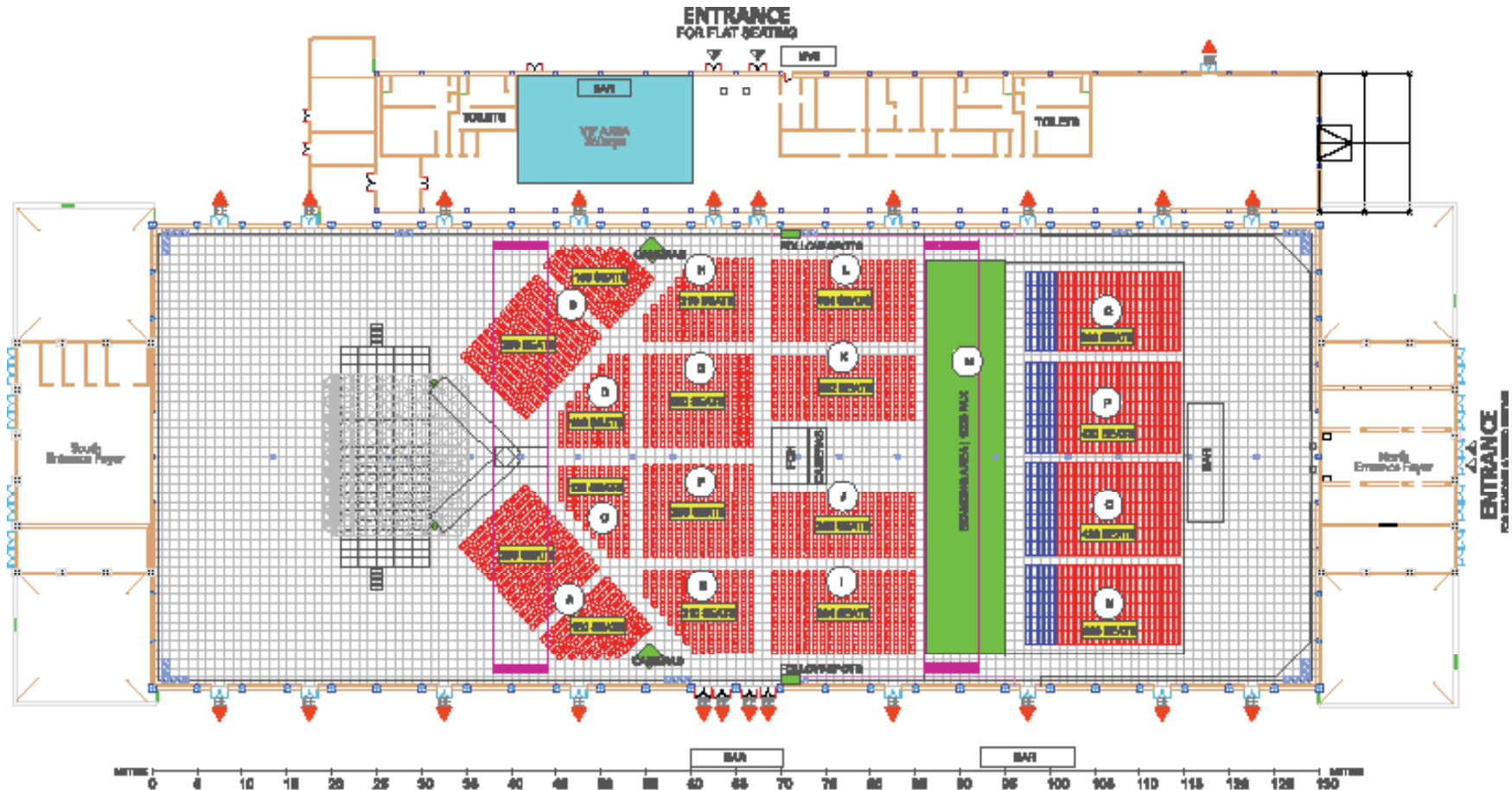


MALTA EUROVISION SONG CONTEST



LARGE THEATRE SETUP

MFCC is often transformed into a theatre for comedy and drama performances. The below is an example of such setup.



TOTAL AREA	5,750sqm of TFS venue
MAIN VENUE ACCESS	South Entrance Gate and South Foyer
SETUP FOR	5,200 persons

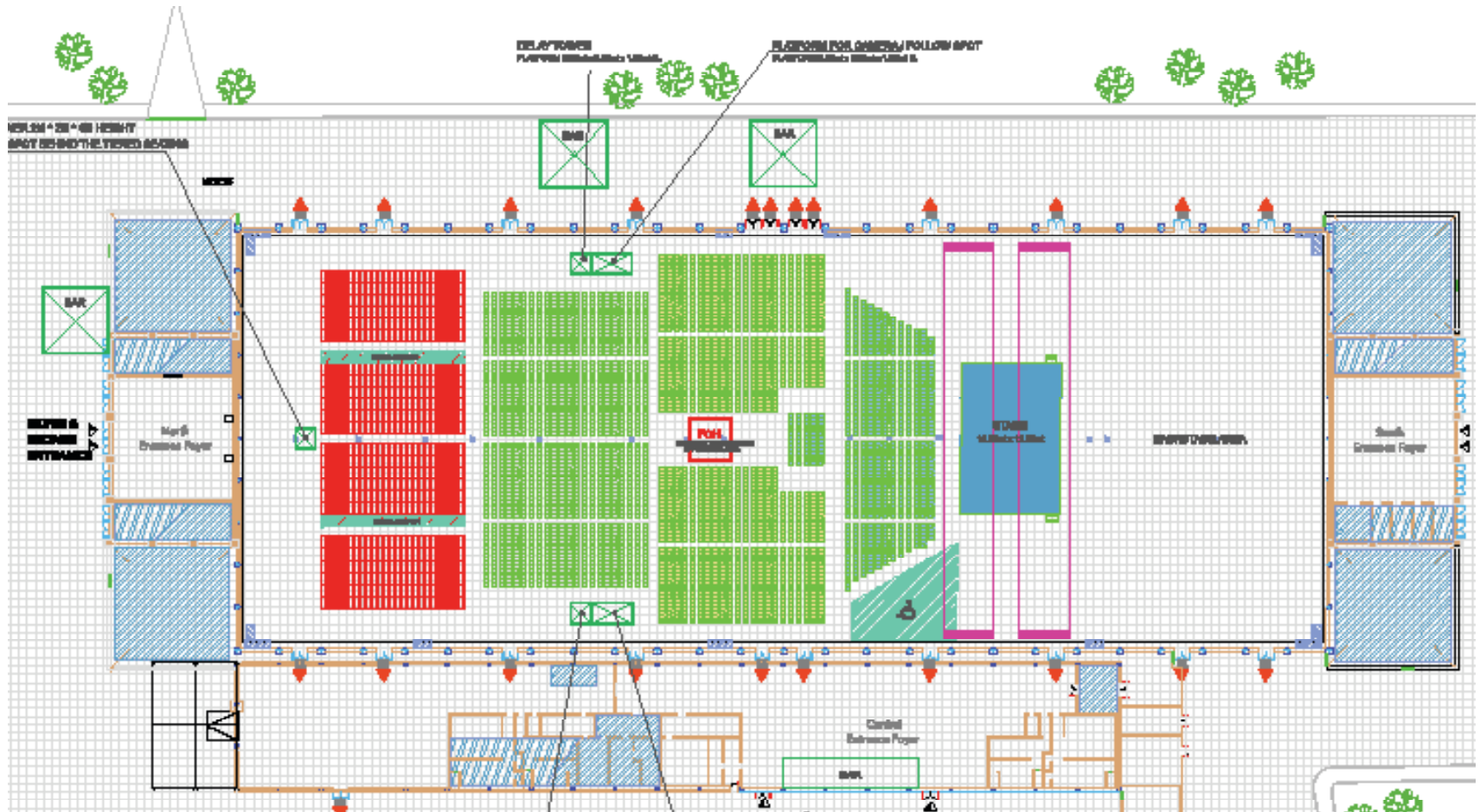


VOICES



CONCERTS - Internal Setup

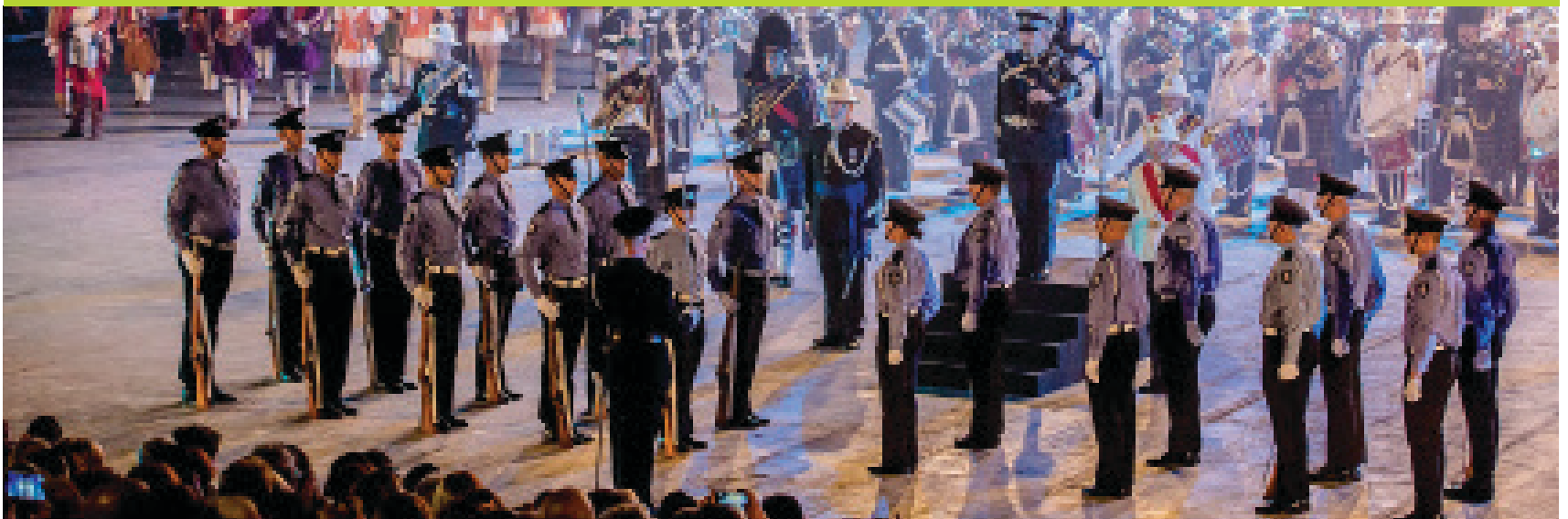
MFCC provides the space for musical events such as concerts and gigs. We have hosted a number of great names including Il Volo, Air Supply, Andrea Bocelli, Tom Jones, Michael Bolton, David Guetta, The Prodigy, Faithless, Tiesto, Fatboy Slim and many others. These concerts have been set up both inside the TFS and outside. The area is reorganised according to the needs of the event.



TOTAL AREA	approx 6,500sqm
MAIN VENUE ACCESS	North, South & Central Entrance Gates
SETUP FOR	5,000 people



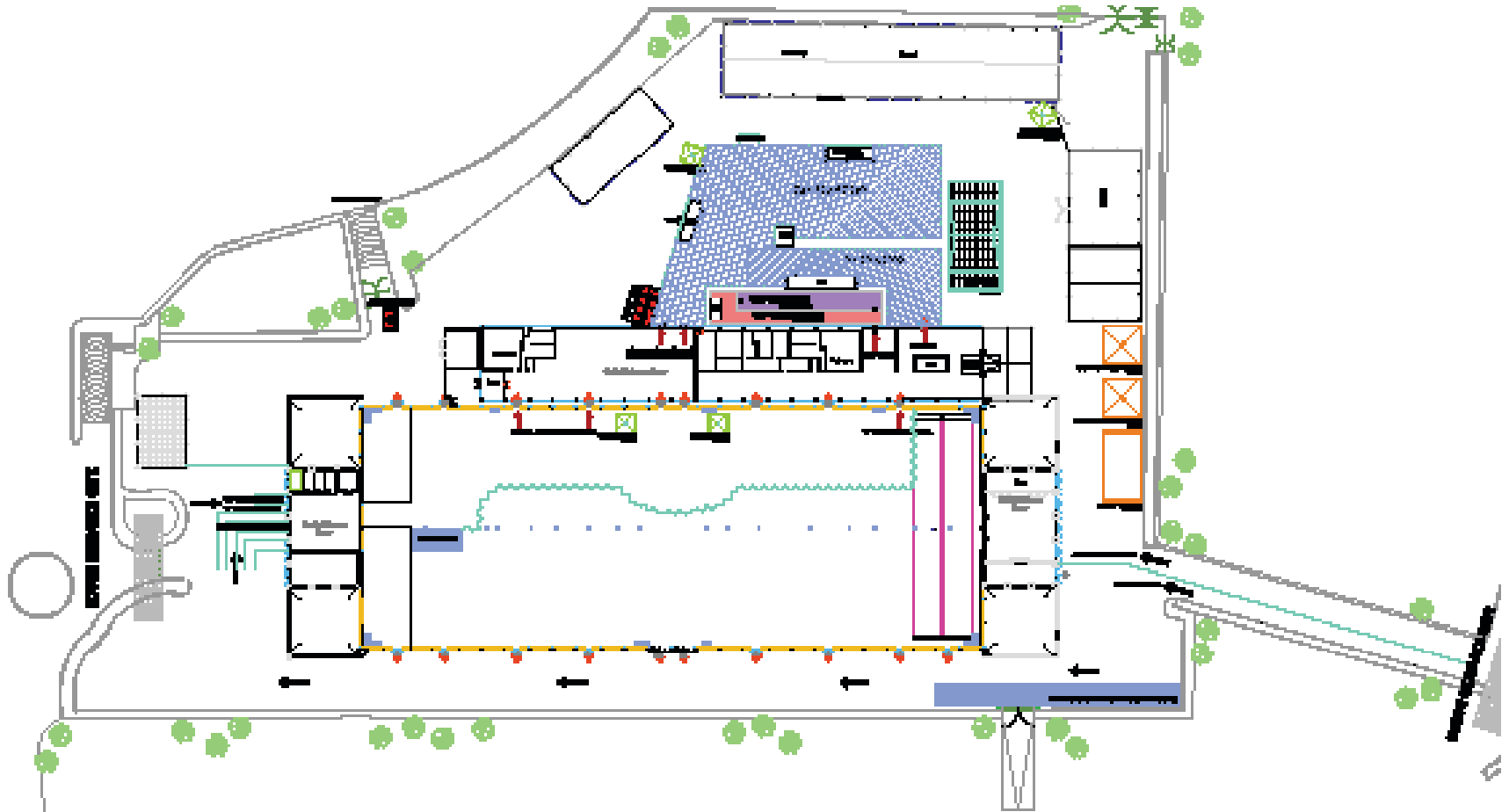
ROCKESTRA



MALTA MILITARY TATTOO

CONCERTS - External Setup

MFCC provides the space for musical events such as concerts and gigs. The outside setup has been used for a number of great names including Il Volo, Laura Pausini, Zucchero, Antonello Venditti, Calvin Harris, Creamfields Festival, David Guetta, The Prodigy and many others. The external area is reorganised according to the needs of the event.



TOTAL AREA _____

MAIN VENUE ACCESS _____

SETUP FOR _____

approx 2,000sqm of grounds area

North and South Entrance Gates

5,000 people



AFROJACK CONCERT





IL VOLO



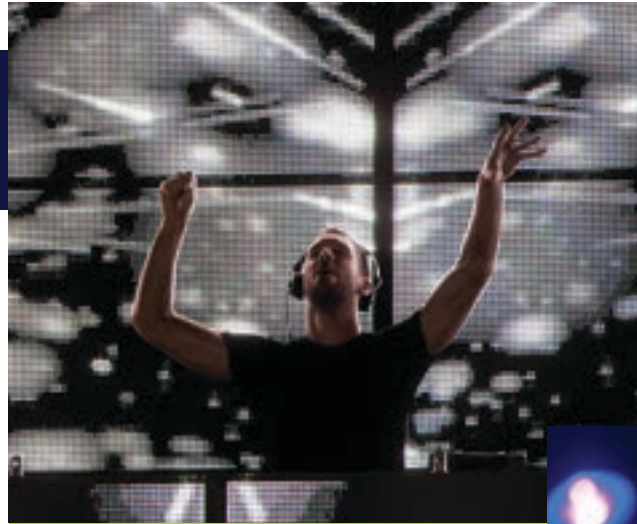
ZUCCHERO



PERSONALITIES



ANDREA BOCELLI



CALVIN HARRIS



GIANNA NANNINI



LAURA PAUSINI



TOM JONES



EROS



ZUCCHERO



ANASTASIA



DAVID GUETTA



ANTONELLO VENDITTI

ADDITIONAL SERVICES



GAZEBO 4X4 m



GAZEBO 5X5 m



GAZEBO 8X8 m



GAZEBO 10X10 m



VELA 4x4 m



HEXAGON



PAGODA 4x4 m





MBA PANELS

M FCC Ltd.
Level 1 | Millennium Stand
The National Stadium
Ta' Qali | ATD4000
MALTA

TEL +356 2141 0371

+356 2141 0372

EMAIL info@mfcc.com.mt

WEB www.mfcc.com.mt

FACEBOOK /MFCC.Malta



venue | portfolio